

REFMAN

Drydocking Software

If you write drydock specifications,
YOU NEED REFMAN's
Specification
Generator

If you want ship's
staff involved in
specification writing,
YOU NEED REFMAN's
Shipboard
Defect
Recording



If you
compare
tenders from
shipyards,
YOU NEED
REFMAN's
Cost Control

If you are responsible
for controlling costs
during drydocking,
YOU NEED REFMAN's
Cost Control

If you want
standard
specifications,
YOU NEED
REFMAN's
Master Data
Maintenance

for **Superintendents**
& **Ship's Officers**

Writing drydock specifications

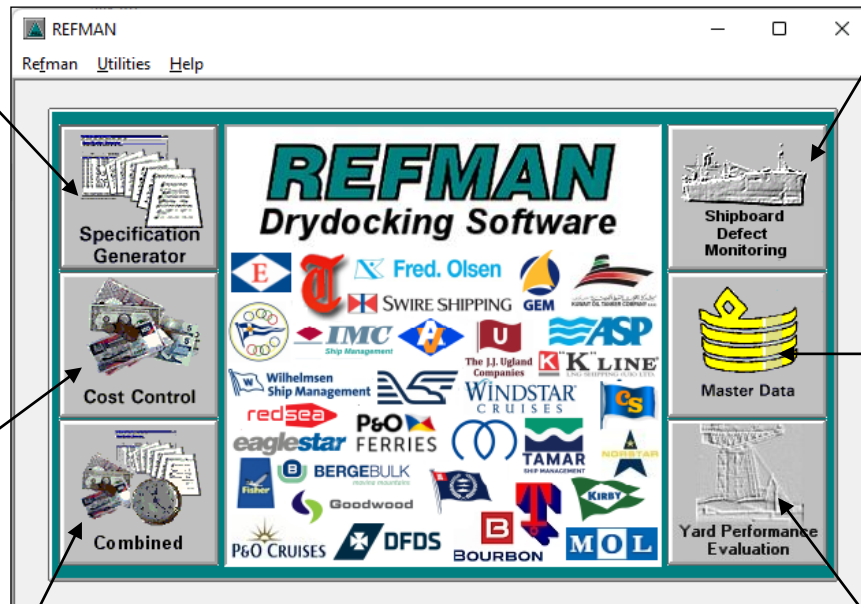
Specification Generator is used for compiling and printing Refit, Repair & Drydock Specification documents

... getting ship's staff involved

Shipboard Defect Recording & Monitoring is used by ship's staff to record defects and other ship initiated jobs

Comparing shipyard tenders

Cost Control is used for recording, analysing and reporting on the cost of jobs in Refit, Repair & Drydock Specifications



Creating company standards

Master Data is used for setting up standard specification templates, standard job descriptions & standard libraries

Keeping control of costs & monitoring progress during the drydocking

Specification Generator, Cost Control & Time Management all in one

Evaluating shipyard performance

Yard Performance Evaluation is used to "rate" or "grade" the yard's performance before, during and after the repair period.

Overview

REFMAN is a software package that has been specially designed to allow technical people who are responsible for the day to day running of ships, to take control of the drydocking and ship repair process.

REFMAN has a Specification Generator for compiling and printing specification documents; Cost Control for comparing shipyard tenders and reporting drydocking costs, Shipboard Defect Recording & Monitoring for managing defects and other jobs initiated onboard. There is also a Drawing Package for creating simple drawings, sketches and annotating photographs; a Time Management module for planning and keeping track of the progress of jobs and a Yard Performance Evaluation module for rating the yards performance.

When you use REFMAN to write specifications there are no large word processed documents to manipulate and the software itself handles all of the job numbering, text

formatting, collation and merging of attached files and it automatically creates a table of contents and a list of attached files, so that leaves you with a lot more time to concentrate on the technical content of the specification.

Also, all of REFMAN's modules are fully integrated so when you use REFMAN to write a specification the framework for comparing tenders, recording costs, project planning, daily reporting and writing a drydock report is created and updated automatically each time a job is added, removed or cancelled in a specification.

So when you use REFMAN to control your costs, there are no cumbersome spreadsheets to setup, no complex formulas and the software produces all the reports that are needed automatically. The shipyards can even quote electronically so that means less time typing and checking numbers which leaves you a lot more time to concentrate on what the numbers mean.

REFMAN – Specification Generator

REFMAN's Specification Generator has been designed to allow technical people to quickly and easily produce well formatted, professional looking specification documents.

To achieve this, REFMAN allows the creation of Standard Specification templates which can either be 'general' for use with any ship, or they can be tailored to a particular type or class of ship or tailored to an individual ship.

REFMAN encourages a high degree of standardisation, not just in the presentation, style and layout of specification documents, but also in technical content.

Standardisation of content is achieved by making use of previously written job descriptions both as templates for new jobs and as standard work descriptions which can be used over and over again.

This saves both time and effort when preparing new specifications and allows you to refine or 'hone' standard job descriptions each time they are used, giving you the possibility of producing 'tighter' and 'tighter' specifications!

Features include:

- *Automatic Job numbering/re-numbering.*
- *Instant recall of any previous job description.*
- *Simple to use job writing facilities.*
- *Simple to use drawing tool for line drawings, sketches & annotating photographs and scanned images.*
- *Automatic formatting of printed specifications.*
- *Flexible document printing facilities.*
- *Automatic table of contents & list of attached drawings.*

REFMAN – Cost Control

REFMAN's Cost Control module has been designed to allow technical people who are NOT 'accountants' to quickly and easily forecast the cost of a refit or drydocking, to obtain and compare competing tenders, to monitor and report on costs and keep track of changes during the repair period itself.

In a REFMAN analysis there are no complicated 'accruals', no 'reversals' and no 'balances B/F'. Instead, REFMAN simply uses the 'best' cost information which is available at any particular time. If a job is complete, the 'actual cost' is used, if a job is in progress, the 'bid' is used, and if a job has been included as an 'extra' and the only cost available is an estimate, then that will be used.

By combining these together, at all times before, during and after a repair period, the Superintendent or Port Engineer gets the clearest possible indication of 'how much has to be saved' or 'how much is available to spend'.

Features include:

- *Ability to record estimated costs for yard & owners items, yard bid (including contingency for exclusions), and actual yard and owners costs for each job.*
- *Analysis of job costs against repair, capital, guarantee, insurance and/or individual account/project budgets.*
- *Ability to send Specifications to the shipyard and for them to submit tenders electronically so avoiding the need to enter prices and comments manually.*
- *Recording of yard tenders in tender currency with analysis in your own currency.*
- *Full range of on screen and printed reports in your own or tender currency.*

REFMAN – Shipboard Defect Recording & Monitoring

Recognising the part which ship's Engineers and Deck Officers play in initiating many of the 'repair' type items in a specification, REFMAN has been designed to provide a smooth transition for each specification item from 'defect report', through to inclusion as a 'job' in a specification right through to its eventual completion.

This is achieved by providing an onboard system for recording defects in a format which can be transferred to the Superintendent or Port Engineer and incorporated directly into a specification document with little or no re-typing.

This makes it easier and quicker for the Superintendent or Port Engineer to get ship initiated jobs into the specification.

Also, because the Shipboard Defect Recording Module is cross-referenced with REFMAN's Specification Generator,

when the final specification is produced, the ship's staff can easily confirm that all of the defects which they have reported actually found their way into the specification.

Features include:

- *'On screen forms' to ensure that the ship's staff supply all the information which the Superintendent needs.*
- *Automatic defect numbering.*
- *Simple to use defect writing facilities.*
- *Simple to use drawing tool for line drawings, sketches & annotating photographs and scanned images.*
- *Facilities for 'private' or 'departmental' work lists for 'ship's staff' jobs.*
- *Optional module which allows onboard defects to be monitored from the office and provide feedback to the ship about how each defect is to be dealt with.*

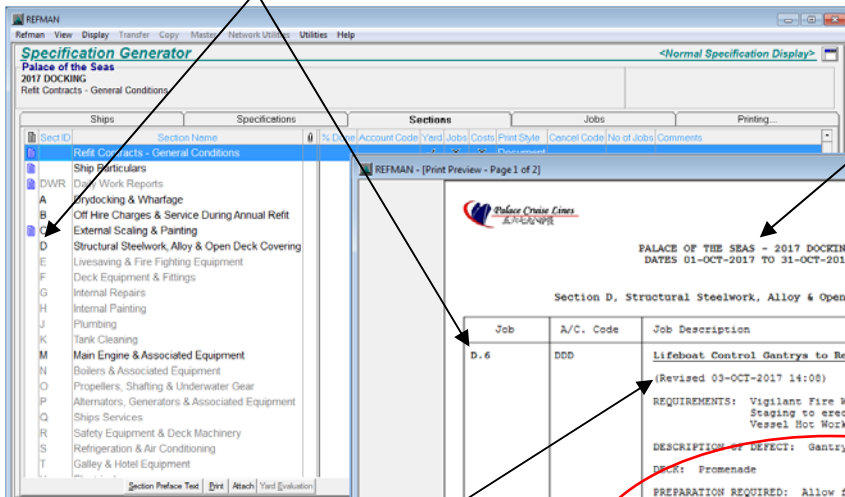
System Requirements: Win11/10/8/7 (64 bit) with 4GB RAM or Win10/8/7 (32 bit) with 2GB RAM and 500 MB Free Hard Disk Space.

Automatic job numbering

REFMAN automatically assigns each new job the correct number based on the section it is in and re-numbers existing jobs where necessary. So no more duplicated or missing job numbers in your specifications!

Automatic page headers

REFMAN automatically generates the header for each page, containing company logo or name, ship name, title, docking dates, section name and page number.



Automatic formatting of job names

REFMAN automatically prints the job name in bold and underlines it so every job is printed in exactly the same style.

Automatic version control

REFMAN shows you the last revised date, date printed and automatically makes sure you have the latest version of all standard items.

Page format

REFMAN automatically generates either a 'form-like' layout or a 'plain' document style layout according to your company preference.

Tag codes

Pick from a list of job 'Requirements' and REFMAN automatically shows them in the specification.

You only type this part...

...and REFMAN will automatically format the text, set the font, print it on the page and if required continue on to the next page and automatically re-head the continuation page with the job number and name.

Overview

REFMAN's Specification Generator has been designed to allow technical people to quickly and easily produce well formatted, professional looking specifications.

To achieve this, REFMAN allows the creation of Standard Specification templates which can either be 'general' for use with any ship, or they can be tailored to a particular type or class of ship or tailored to an individual ship.

REFMAN encourages a high degree of standardisation, not just in the presentation, style and layout of specification documents, but also in technical content.

Standardisation of content is achieved by making use of previously written job descriptions both as templates for new jobs and as standard work descriptions which can be used over and over again.

This all saves both time and effort when preparing new specifications and allows you to refine or 'hone' standard job descriptions each time they are used, giving you the possibility of producing 'tighter' and 'tighter' specifications!

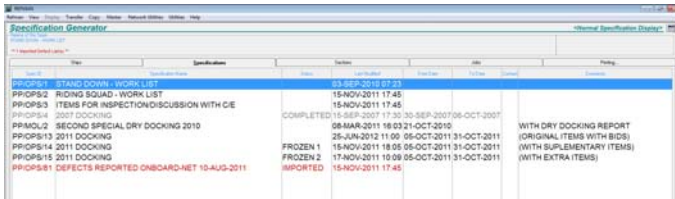
REFMAN's Specification Generator also avoids the need to handle individual document files for each job and the collation problems which go with them and it does this without the need to manipulate large, cumbersome word processed specification documents and the formatting and printing problems which go with them.

REFMAN's Specification Generator is easy to use and handles all of the job numbering, text formatting, collation and/or merging of attached files. It also automatically creates a table of contents and list of attached files. So that all leaves you with a lot more time to concentrate on the technical content of the specification.

REFMAN – Specification Generator

Provides the Superintendent or Port Engineer with facilities to create refit, repair & drydock specifications, copy and store specifications, add, amend, delete and cancel jobs, move jobs from one specification to another, print specifications and incorporate defect reports and other jobs which have been initiated in REFMAN's Shipboard Defect Recording module.

It also provides powerful logic to control the inclusion of previously prepared standard job descriptions and the use of previously written job descriptions as 'templates' for creating new job descriptions.



Specification	Date	Status	Notes
PP10P12 STAND-DOWN - WORK LIST	03-SEP-2010 07:23		
PP10P12 RIDING SQUAD - WORK LIST	15-NOV-2011 17:45		
PP10P13 ITEMS FOR INSPECTION/DISCUSSION WITH C/E	15-NOV-2011 17:45		
PP10P14 2011 DOCKING	COMPLETED 15-SEP-2011 17:30-30-SEP-2011 09:00		
PP10M2 SECOND SPECIAL DRY DOCKING 2010	08-MAR-2011 18:03-21-OCT-2010		WITH DRY DOCKING REPORT
PP10P12 2011 DOCKING	25-JAN-2012 11:00-05-OCT-2011 31-OCT-2011		(ORIGINAL ITEMS WITH BIDS)
PP10P14 2011 DOCKING	FROZEN 1 15-NOV-2011 18:05-05-OCT-2011 31-OCT-2011		(WITH SUPPLEMENTARY ITEMS)
PP10P15 2011 DOCKING	FROZEN 2 17-NOV-2011 10:00-05-OCT-2011 31-OCT-2011		(WITH EXTRA ITEMS)
PP10P15 DEFECTS REPORTED ONBOARD-MET 10-AUG-2011	IMPORTED 15-NOV-2011 17:45		

Easy access to previous specifications and ship's defect reports, as well as a means of keeping track of non-drydocking jobs.

REFMAN allows you to create any number of specifications, so you can compile a specification for the next scheduled drydocking whilst simultaneously creating work lists for intermediate repair periods (some of which you may manage yourself such as in water surveys, wet docks, or stand-down periods).

You can also use a REFMAN specification as a 'holding area' for defect reports which have been received from a ship but which need to be inspected before deciding whether or not to include them as jobs in a specification.

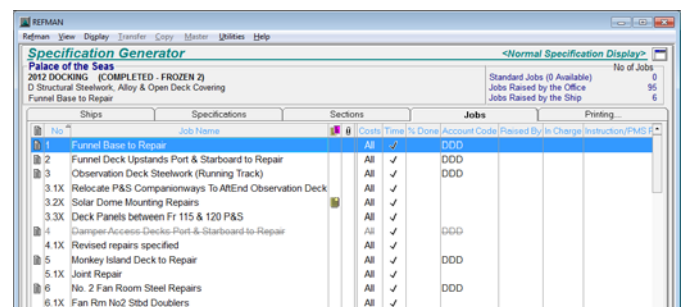
REFMAN also allows you to 'tag' jobs as being of a particular type or as having particular requirements and to use these to group related jobs into work lists.

These work lists or 'mini-specifications' can be useful when you are planning work for an onboard repair team or sea-going maintenance squad or for a specialised squad such as an asbestos abatement team, etc. These can also be used during the repair period itself for extracting just those jobs which are subject to inspection by the classification society or flag state surveyor.

Features

- Complete management of your job description files.
- Standard specification sections tailored for your Company (SFI Group System optional) to ensure standardisation across all specifications.
- Create standard specification templates for an entire fleet, class or type of ship, or for an individual ship.
- Build a library of your own standard job descriptions which can instantly be incorporated into a specification.

- Ability to copy a complete specification for use as a template for the next refit or drydocking specification.
- Easy retrieval, editing and re-use of any job description which has previously been included in any specification on any ship.
- Automatic inclusion of mandatory sections or pages (particularly useful for ship particulars, standard terms & conditions, general instructions, etc.).
- Easy to use facilities which allow jobs to be added, amended or deleted/cancelled at any time.
- Simple to use drawing tool for line drawings, sketches & annotating photographs and scanned images.
- Automatic job number allocation and automatic re-numbering when jobs are added, moved or deleted.
- Automatic collation of external Attached files/drawings with automatically generated 'page numbered' list of attachments with direct access via hyperlink.
- Flexible document printing facilities which allows printing of a complete specification; a single section; a single job; just the 'supplementary' items; just jobs of a particular type; or print a summary of the requirements of each job.
- 'Tag' codes to provide each job with a succinct summary of what the job entails and to enable jobs to be grouped into work lists or 'mini-specifications'.
- Automatic generation of title page and 'page numbered' table of contents for 'original' and 'supplementary' specifications as well as for work lists or 'mini-specifications' generated using 'Tag' code(s).



No	Job Name	Costs	Time	% Done	Account Code	Passed By	In Charge/Instruct/PMS
1	Funnel Base to Repair	All	✓	DDD			
2	Funnel Deck Upstands Port & Starboard to Repair	All	✓	DDD			
3	Observation Deck Steelwork (Running Track)	All	✓	DDD			
3.1X	Relocate P&S Companionways To AftEnd Observation Deck	All	✓	DDD			
3.2X	Solar Dome Mounting Repairs	All	✓	DDD			
3.3X	Deck Panels between Fr 115 & 120 P&S	All	✓	DDD			
4	Dampers Access-Decks Port & Starboard to Repair	All	✓	DDD			
4.1X	Revised repairs specified	All	✓	DDD			
5	Monkey Island Deck to Repair	All	✓	DDD			
5.1X	Joint Repair	All	✓	DDD			
6	No. 2 Fan Room Steel Repairs	All	✓	DDD			
6.1X	Fan Rm No2 Stbd Doublers	All	✓	DDD			

Full control over 'original', 'supplementary' and 'extra' jobs.

- Record 'supplementary' and 'extra' jobs into any section or into separate 'supplementary' or 'extras' sections.
- Separate 'Notes' & 'Remarks' for each job in the specification to enable the Superintendent to record information which will be used to help negotiate the final bill and/or create a post-docking Drydock Report.
- Create 'Daily Reports' which can be sent to the ship owner/manager in an automatically generated email along with 'Notes' and/or 'Remarks' included and Cost and/or Time reports attached.

System Requirements: Win11/10/8/7 (64 bit) with 4GB RAM or Win10/8/7 (32 bit) with 2GB RAM and 500 MB Free Hard Disk Space.

On-screen totalling

REFMAN shows you constantly updated totals on the screen so you can easily see the current position relative to the budget.

Automatic status report

REFMAN automatically generates a one page Repair Status Sheet showing a complete summary of all of the docking costs week by week or even day by day if required.

Automatic yard comparison

REFMAN automatically generates a yard bid comparison report, in your own base currency which can automatically highlight the 'most expensive', 'least expensive', etc.

Section	Section Name	TOTAL YARD	TOTAL OWNERS	TOTAL Y/O	Repair	Capex	Insurance	Guarantee	Account Code	Yard	Jobs	Costs/Unit
A	Drydocking & Wharfage	133,500.00	1,500.00	147,000.00	132,307.20				14,700.80	DDM 230	✓	Box
B	Offline Charges & Service During Annual Refit	161,730.00	1,000.00	175,730.00	161,971.10				13,764.90	S CHARGE	✓	Box
C	External Scaling & Painting	295,043.00	11,490.00	409,503.00	409,503.00					DDM 150	✓	Box
D	Structural Steelwork Alloy & Open Deck Covering	2,051,937.00	21,000.00	2,973,537.00	1,927,770.00	125,767.00	20,000.00			DDM 100	✓	Box
E	Livesaving & Fire Fighting Equipment	552,150.00	116,436.00	710,646.00	710,646.00					DDM 120	✓	Box
F	Deck Equipment & Fittings	2,102,073.00		2,102,073.00	2,102,073.00					DDM 100	✓	Box
G	Internal Repairs	2,112,627.00	94,700.00	2,207,325.00	2,091,063.00					DDM 160	✓	Box
H	Internal Painting	538,618.00	2,100.00	540,718.00	540,718.00					DDM 150	✓	Box
I	Plumbing	427,977.00	7,891.00	435,868.00	435,868.00					DDM 170	✓	Docc
J	Tank Cleaning	468,014.00	174,109.00	642,123.00	632,123.00		10,000.00			DDM 210	✓	Docc
K	Man Engine & Associated Equipment	194,909.00	14,030.00	208,939.00	208,939.00					DDM 200	✓	Docc
L	Boilers & Associated Equipment	317,703.00	249,088.00	566,791.00	566,791.00					DDM 230	✓	Box
M	Propellers, Shafting & Underwater Gear	345,836.00	785,958.00	1,131,594.00	1,131,594.00					DDM 210	✓	Box
N	Alternators, Generators & Associated Equipment									DDM 200	✓	Box
Specification Total		9,071,305.00	2,916,358.00	11,989,661.00	10,481,218.30	1,448,977.00	29,000.00	30,465.70				
Total Discount		453,565.24		453,565.24	419,951.82	32,036.27	241.61	1,335.54				
Spec Net of Discount		8,617		8,617								
Budget Remaining		11,550		11,550								

YARD: Yare Inlet Shipbuilders Limited
USD @ 1.00 U.S. Dollars = 2,600.00 Canadian Dollars

FORECAST	AC	TR	EB	CB
Week 1	Week 2	Week 3		
13-11	20-11	27-11		
30-SEP-2017	07-OCT-2017	14-OCT-2017		
Original - Bid	609,280.00	609,280.00	609,280.00	2
Original - Exclusions	14,400.00	14,400.00	14,400.00	
Original - No bid	7,000.00	7,000.00	7,000.00	
Original - Adjustment				
Original - Cancelled		(28,000.00)	(84,000.00)	
Original - Total	630,680.00	602,680.00	546,680.00	2
Supplementary - Bid	25,200.00	25,200.00	25,200.00	
Supplementary - Exclusions				
Supplementary - No bid				
Supplementary - Adjustment				
Supplementary - Cancelled				
Supplementary - Total	25,200.00	25,200.00	25,200.00	
Extras	6,230.00	6,230.00	135,230.00	
Gross Shipyard Cost	662,110.00	634,110.00	707,110.00	282,400.00

Palace of the Seas - 2017 DOCKING

Job	Job Name	Estimate	BIDS			EST USED
			(GBP-USD)	(EUR-USD)	(SGD-USD)	
			(0.85000)	(0.52000)	(1.00000)	
			ASP Tees	Lloyd Aier	Sembawang	
SECTION : A DRYDOCKING & WHARFAGE						
A.1	Plottage And Tugs	10,000.00	3,076.92			15,304.35
	Exclusion/Contingency					236,000.00
A.2	Drydocking The Vessel	160,000.00	307,693.31			380,434.73
A	DRYDOCKING & WHARF	190,000.00	310,769.23	395,729.13		300,000.00
SECTION : B OFF HIRE CHARGES & SERVICE DURING ANNUAL REFIT						
B.1	Operations Room	2,000.00	6,153.85	5,434.78		6,000.00
B.2	Store Steam Supply	15,000.00	65,230.77	27,173.91		9,300.00
B.3	Domestic Fresh Water Supply		23,384.62			4,200.00
B	OFF HIRE CHARGES ETC	17,000.00	98,769.24	32,608.69		20,100.00
SECTION : C EXTERNAL SCALING & PAINTING						
C.1	Underwater Area Preparation and Painting	68,000.00	138,461.54	108,895.65		68,000.00
C.2	Boothp Area Preparation and Painting	15,000.00	15,394.62	32,809.70		25,000.00
	Exclusion/Contingency		6,153.85			9,300.00
C.3	Ladelines & Draught Marks	5,000.00	21,538.46	21,739.13		9,600.00
C	EXT. SCALING & PAINT	88,000.00	181,538.46	163,044.48		102,600.00
SECTION : D STRUCTURAL STEELWORK ALLOY & OPEN DECK COVERING						

Pre-defined reports which are error and tamper free

Overview

REFMAN' Cost Control module has been designed to allow technical people who are NOT accountants to quickly and easily forecast the cost of a refit or drydocking, to obtain and compare competing tenders, to monitor costs during the repair period itself and to reconcile and negotiate the final bill on completion.

In a REFMAN analysis there are no complicated 'accruals', no 'reversals' and no 'balances B/F'. Instead, REFMAN simply uses the 'best' cost information which is available at any particular time. If a job is complete, the 'actual cost' is used, if a job is in progress, the 'bid' is used, and if a job has been included as an 'extra' and the only information which is available is an estimate, then that is what will be used.

By combining these together, at all times before, during and after the repair period, the Superintendent or Port

Engineer gets the clearest possible indication of 'how much has to be saved' to meet the budget or 'how much is available to spend'.

REFMAN's Specification Generator and Cost Control modules are fully integrated so when you use REFMAN to write a specification, the framework for comparing bids, recoding & reporting costs and project planning is created and updated automatically each time jobs are added, deleted or cancelled in a specification.

REFMAN's Cost Control module avoids the need to manipulate large cumbersome spreadsheets with complex formulas and the problems which go with them.

REFMAN's Cost Control module is easy to use and takes care of all the 'accounting and reporting tasks' leaving you free to concentrate on what the numbers mean.

REFMAN – Cost Control

Provides the Superintendent or Port Engineer with facilities for obtaining shipyard tenders electronically and for comparing prices on a job by job basis, in a mix of currencies.

It also provides facilities for recording estimates of the cost of yard work (optional) and sub-contract labour, owner's supply materials and general expense elements of the jobs which have been included in a specification.

Once a yard has been selected and the repair period is underway, REFMAN is used by the Superintendent in the yard (normally on a laptop/notebook computer) to monitor the cost of jobs which arise as 'extras' as well as the cost of variations in the scope of the originally contracted work.

Finally, when it is time to settle the shipyard's invoice, REFMAN provides facilities to record the actual cost of each job and produce reports in 'bid' currency for agreeing or negotiating the final cost.

Features

- Complete management of costs with the ability to record estimated costs for yard & owner's items, yard bid (including contingency for exclusions) and actual yard and owners costs for each job.
- Full control over allocation of account codes to each job and the amount (or proportion) of the cost of each job to allocate against each budget.
- Automatic allocation of costs against budgets for repair, capital (investment) expenditure, insurance (casualty or damage claims) and guarantee work.
- Yard bid comparison which takes account of the cost of yard items, owners items, negotiated discounts, number of repair days and number of deviation days

Support for four levels of shipyard percentage/lumpsum discounts.

- Ability to send Specifications to the shipyard and for them to submit tenders electronically so avoiding the need to enter prices manually.

- Facilities to record 'supplementary' jobs which arise after the original yard tender is accepted but before the drydocking begins

Bid Comparison Screen showing all costs for each shipyard.

- Facilities to record 'extra' jobs into any section or into a separate 'extras' section. Either way, 'extra' jobs are totalled separately from originally contracted work.

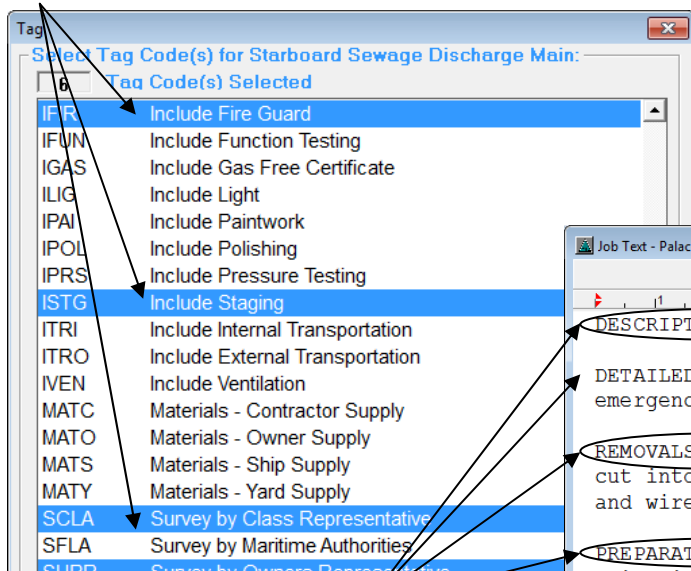
Cost of 'original' and 'extra' jobs shown in 'bid' and 'owner's' currency.

- On screen and printed reports to facilitate cost analysis including a one page Repair Status Sheet which shows a complete cost summary/forecast, with the ability to save and recall forecasts.
- Full reporting of the cost of projects, insurance/casualty and guarantee claims.
- Automatic apportioning and allocation of service costs to the cost of projects and claims.
- Full reporting of the cost of owner's supply items with facilities to record up to eight categories for each job and to report by purchase/work order numbers.
- 'Tag' codes to produce cost reports and summaries for jobs of a particular type or category.
- Pre-defined, reports which are easy to produce and free from 'spreadsheet errors' ensure that management always receives accurate information in a consistent format, regardless of which Superintendent is in charge of the docking.

System Requirements: Win11/10/8/7 (64 bit) with 4GB RAM or Win10/8/7 (32 bit) with 2GB RAM and 500 MB Free Hard Disk Space.

Tag codes

Provide a quick and simple way for ship's staff to indicate what is involved in a defect or job without any typing.



On screen 'forms'

Each time a defect is recorded, REFMAN automatically displays a 'company' standard form which contains prompts to remind ship's staff about what information is required for the particular type of defect which is being recorded.

Simple drawing tool

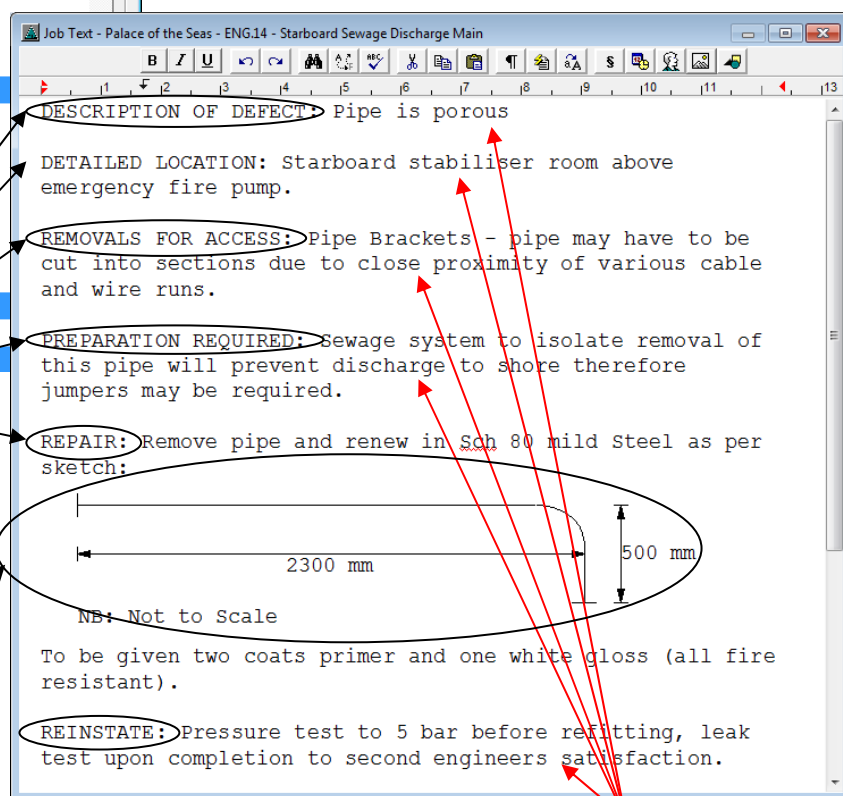
REFDRAW for line drawings, sketches & annotating digital photographs and scanned images.

3 Simple steps to writing a defect report

- Type a brief heading/title for the defect.
- Type a few words against the prompts in the standard form.
- 'Tick' the tag codes which are relevant.

...and that is all there is to it ...which should ensure that the Superintendent never sees a 'one-line' defect description again...

...and ensure that the description actually contains all of the information which the Superintendent needs.



ship's staff type this

Overview

Recognising the part that ship's Engineers and Deck Officers play in initiating many of the 'repair' type items in a refit, repair or drydock specification, REFMAN has been designed to provide a smooth transition for each specification item from 'defect report', through to inclusion as a 'job' in a specification right through to its eventual completion.

This is achieved by providing an onboard system for recording defects in a format which can be transferred to the Superintendent or Port Engineer for approval and incorporated directly into a specification document without any sorting, filing or re-typing.

This makes it quicker and easier for the Superintendent or Port Engineer to get ship initiated jobs into the specification.

REFMAN's Shipboard Defect Recording module is easy to use by ship's Engineer and Deck Officers, even if they have little or no previous computer experience.

Through the use of standard forms in conjunction with standard 'tag' codes, REFMAN's Shipboard Defect Recording module makes it easier for ship's Engineers and Deck Officers to provide the information which the Superintendent or Port Engineer requires in order to prepare the specification.

Also, because the Shipboard Defect Recording Module is cross-referenced with REFMAN's Specification Generator, when the specification is eventually produced, ship's staff can quickly and easily check that all of the defects which they have reported actually found their way into the final specification.

REFMAN – Shipboard Defect Recording

Provides ship's staff with facilities to record defects on board, including creating and storing defect lists, adding, amending, deleting and cancelling defects, moving defects from one list to another, printing defect lists and transferring defects reported in a particular period to the Superintendent or Port Engineer.

REFMAN allows you to create any number of defect lists. Lists can be 'exportable', that is to say that the defects they contain can be transferred to the Superintendent or Port Engineer, or they can be 'non-exportable' which means that they can be used as 'private' or 'departmental' onboard work lists for ship's staff.

Jobs in 'private' work lists can start out as 'one-line' items which are simply deleted as they are completed. Those items that cannot be completed by ship's staff in service can later be expanded into a full defect description before being assigned to the 'exportable' list for transfer to the Superintendent or Port Engineer for possible inclusion in a refit, repair or docking specification.



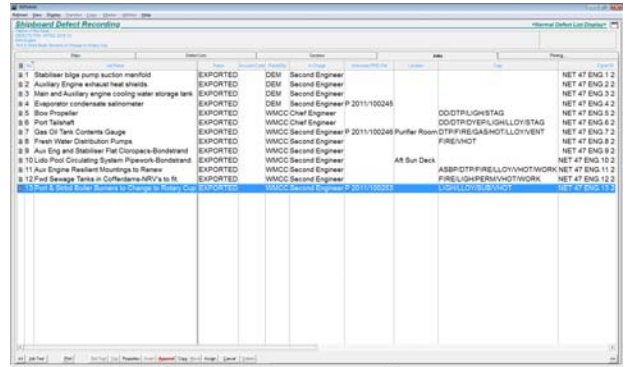
Easy to use by ship's staff.

REFMAN also allows ship's staff to assign codes to jobs to 'tag' them as being of a particular type or as having particular requirements. These 'tag codes' can then be used to produce work lists of similar or related work for use during a stand down period or other *ad hoc* repair periods.

Features

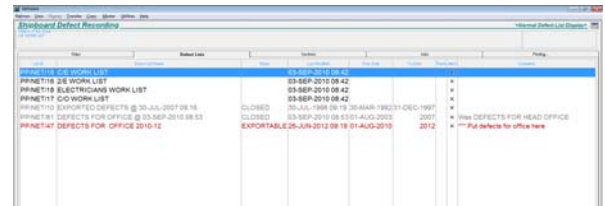
- On board recording of defects and job descriptions.
- Pre-defined sections for ease of use, ease of printing and standardisation of reporting across the fleet.
- On screen forms to ensure that ship's staff are always prompted to provide a full description of every job.
- Simple to use defect writing facilities with drawing tool for line drawings, sketches and annotating photographs and other scanned images.
- Easy to use save and recall facilities which allow defects to be added, amended or cancelled at any time.
- 'Tag' codes to provide defects with a summary of the job content and to enable defects to be grouped into work lists or 'mini-specifications'.

- Automatic numbering of defects as they are added to a defect list.



Defects transferred to Superintendent are marked as 'exported'.

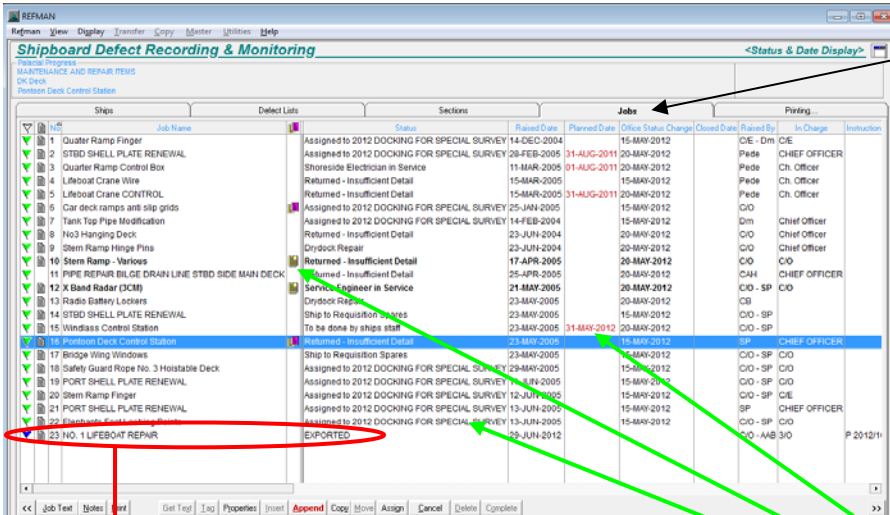
- Flexible printing facilities which allow printing of a complete defect list; a single section; an individual defect; all defects of a particular type, or print just a summary showing the main job requirements or assigned priority.
- Automatic generation of title page and 'page numbered' table of contents for all defect lists.
- Attach external files/drawings for transfer to the office.
- Ability to transfer defects from ship to Superintendent for easy inclusion into a specification.
- Transfer defects via your standard email client using built in "Send by Email"; via your existing file transfer/server replication mechanism or by DVD/CD or Memory stick, etc.
- Facilities for each ship's Engineer and Deck Officer to maintain private 'non-exportable' work lists with ability to transfer to/from the exportable defect list.



Easy access to 'exportable', 'private' and 'running' defect lists.

- Ability for Superintendent to include, add and amend ship initiated jobs with little or no re-typing.
- Superintendent has full control over which ship initiated jobs are included in the specification and which are rejected. Accepted jobs may be allocated to any section in any specification. Rejected jobs can be cancelled, referred back to the ship for additional detail or included in another work list.
- Active defects which are still outstanding at the end of a docking or reporting period automatically 'carried-forward' to a new list.

System Requirements: Win11/10/8/7 (64 bit) with 4GB RAM or Win10/8/7 (32 bit) with 2GB RAM and 500 MB Free Hard Disk Space.

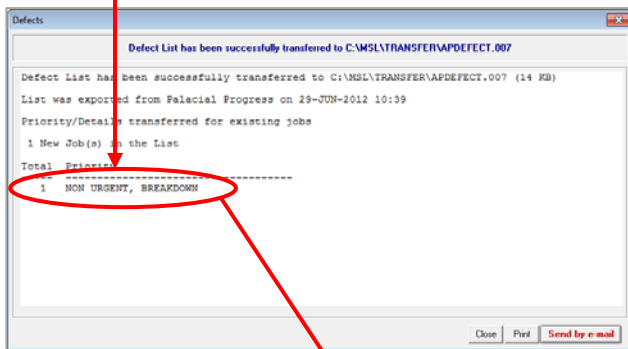


Defects reported onboard

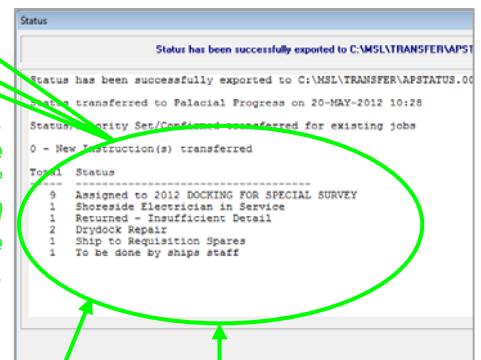
Recording defects onboard is done in the same way as it is in the 'standard' REFMAN Shipboard Defect Recording module (See separate sheet). Briefly, for each defect, **ship's staff need to:**

- Type a brief heading/title for the defect.
- Assign a 'Priority' to the defect.
- Type a few words against the prompts in the standard form.
- 'Tick' the tag codes which are relevant.

Defects reported onboard are then transferred to the office.



Defect status, planned date & any 'notes' transferred back to the Ship.



Notes from the 'Office' to the 'Ship' appear yellow and appear purple if they are from the 'Ship' to the 'Office'.

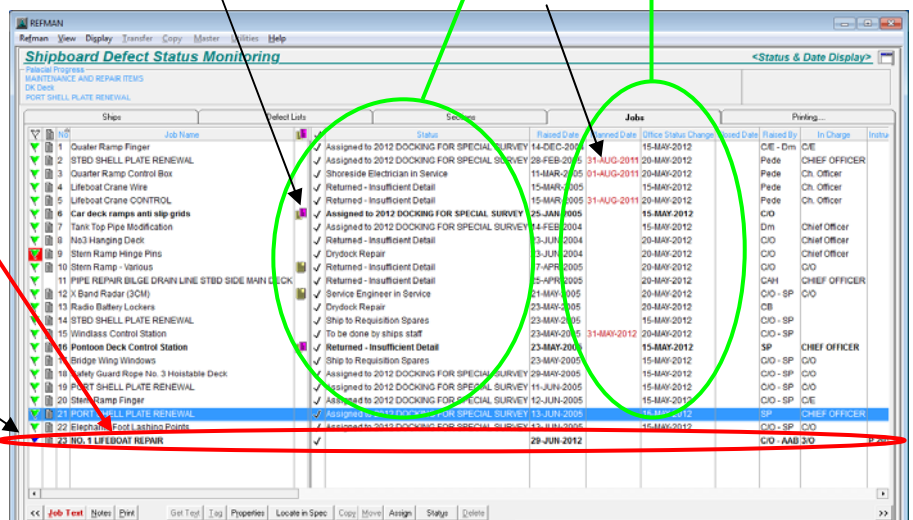
'Planned Date' appears red if overdue.

Defects monitored in the office

Defects transferred to the office are automatically added to the "office copy" of the ships defect list.

Superintendent reviews new defects and sets a status to indicate how each one is to be dealt with.

New defects appear in bold typeface to indicate they have not been read along with a coloured flag to indicate the priority assigned by the ship's staff.



Overview

Makes Shipboard Defect Recording a "two-way" process rather than the "one-way" operation when REFMAN's original Shipboard Defect Recording module is used alone. Defects are reported onboard using REFMAN's Shipboard Defect Recording module as before except that now the ship must also assign a priority to each defect. Defects are transferred to the office where they can be reviewed, assigned to a specification or have a status and planned date assigned to indicate how and when they are to be dealt with.

The status, planned date and any 'notes' explaining why a particular status has been assigned are then transmitted back to the ship. This provides the ship with confirmation that the reported defects have been received as well as providing positive feedback about how and when each one is to be dealt with. As Defects are rectified they are marked as complete by ship's staff along with a date and code to indicate how and when they were actually dealt with. In this way both office and ship can see the current status of every reported defect.

REFMAN – Shipboard Defect Reporting Onboard.

Onboard, ship's staff have access to all the normal facilities provided by the standard REFMAN Shipboard Defect Recording Module, including:

- Pre-defined sections for ease of use and ease of printing.

Ship	Defect Lists	Sections	Jobs	Pricing
DK	Deck	23 of 23	0 of 23	
ENG	Engine	44 of 51	0 of 51	
ELE	ELECTRICAL	6 of 13	1 of 13	

The number of defects waiting for transfer to the office is shown in red.

- On screen forms to ensure that ship's staff are always prompted to provide a full description of every defect.
- Simple to use defect-writing facilities with drawing tool for line drawings, sketches and annotating photographs and other scanned images. Files can also be attached.
- Easy to use save and recall facilities that allow defects to be added amended or cancelled at any time.
- Automatic numbering of defects as they are added to a defect list.
- Tag' codes to provide defects with a succinct summary of the job contents and to enable defects to be grouped into work lists or 'mini-specifications'.

Additionally, each time a defect is recorded onboard, ship's staff are prompted to assign a priority:

Can also be used in conjunction with an interface to your PMS.

Defects are then transferred to the office in the normal way. After the defects have been processed in the office, the ship will receive a status transfer that updates the defect list to show how and when the Superintendent has decided to deal with each of the reported defects.

If the status of a defect changes before it is rectified, both the ship and office copy of the list are updated to keep everyone informed. Once a defect has been rectified, the ship marks it as complete, records the date it was completed and assigns a 'user-defined' completion code to indicate how it was actually dealt with.

REFMAN – Shipboard Defect Status Monitoring in the office.

In the office, the Superintendent has access to a complete copy of the ships defect list which is updated each time the ship makes a transfer to the office. When new defects are received these are reviewed by the Superintendent and then processed.

Defects that are to be dealt with during a Refit or Drydocking are assigned to a Specification as normal, but doing this also sets a status in the Defect List showing exactly which specification it has been assigned to.

Defects that are to be dealt with in service which do not need to be assigned to a specification can still have a "planned date" and a 'user-defined' status code assigned to indicate how they are to be dealt with. A status can also be used to instruct the ship to 'cancel' an item or request that they send more detail about a particular job.

The Superintendent can also attach notes to a defect to give the ship instructions or further explanation and can also amend the Priority that was assigned by the ship.

At any time, the status, planned date, amended priority and any 'notes' can be transferred back to the ship.

Defect ID	Description	Status	Assigned To
DK.4	Lifboat Crane Wire	5	
DK.5	Lifboat Crane CONTROL	5	
DK.6	Car Deck ramps and slip grids	5	

Status reports that can be used by both ship and office to track the status of defects.

Reports can be generated in the office showing the defect status for a single ship, a group of ships or the entire fleet.

Fleet	Ship Name	Defect Status
Fleet A	Palacial Carrier	
Fleet B	Palacial Freighter	** 1 of 1 Defect(s) waiting for Office Status **
Fleet C	Palacial Prestige	
Vessels No Longer in Service	Palacial Pride	
	Palacial Progress	** 2 of 86 Defect(s) waiting for Office Status **
	Palacial Route	
	Palacial Sky	
	Palacial Sun	** 0 of 1 Defect(s) waiting for Office Status **
	Palacial Transporter	** 1 of 1 Defect(s) waiting for Office Status **

The number of defects waiting for action by the office is shown in red.

System Requirements: As per REFMAN's Shipboard Defect Recording or Specification Generator module as appropriate.

Instructions from the office

For each "instruction" the Superintendent:

- Types a brief heading/title.
- Optionally, specifies a section in the defect list to which the item relates, who will be in charge, etc.
- Enters the date by which the item should be completed.
- Types a few words against the prompts in the standard form.

Instructions transferred to the ship

Shipboard Defect Recording & Monitoring

AP/SDR/2 INSTRUCTIONS PENDING @ 29-JUN-2012 18:03

Shipboard Defect Recording & Monitoring

No	Job Name	Raised Date	Planned Date	Office Status Change	Closed Date	Raised By	In Charge	Instr
4	Lifeboat Crane Wire	15-MAR-2005		15-MAY-2012		Pede	Ch. Officer	
5	Lifeboat Crane CONTROL	15-MAR-2005	31-AUG-2011	20-MAY-2012		Pede	Ch. Officer	
6	Car deck ramps anti slip grids	25-JAN-2005		15-MAY-2012		C/O	Chief Officer	
7	Tank Top Pipe Modification	14-FEB-2004		15-MAY-2012		Dm	Chief Officer	
8	No3 Hanging Deck	23-JUN-2004		20-MAY-2012		C/O	Chief Officer	
9	Stern Ramp Hinge Pins	23-JUN-2004		20-MAY-2012		C/O	Chief Officer	
10	Stern Ramp - Various	17-APR-2005		20-MAY-2012		C/O	Chief Officer	
11	PIPE REPAIR BILGE DRAIN LINE STBD SIDE MAIN DECK	25-APR-2005		20-MAY-2012		CAH	CHIEF OFFICER	
12	X Band Radar (3CM)	21-MAY-2005		20-MAY-2012		C/O - SP	C/O	
13	Radio Battery Lockers	23-MAY-2005		20-MAY-2012		CB		
14	STBD SHELL PLATE RENEWAL	23-MAY-2005		15-MAY-2012		C/O - SP	C/O	
15	Windlass Control Station	23-MAY-2005	31-MAY-2012	20-MAY-2012		C/O - SP	C/O	
16	Pontoon Deck Control Station	23-MAY-2005		15-MAY-2012		SP	CHIEF OFFICER	
17	Bridge Wing Windows	23-MAY-2005		15-MAY-2012		C/O - SP	C/O	
18	Safety Guard Rope No. 3 Hoistable Deck	28-MAY-2005		15-MAY-2012		C/O - SP	C/O	
19	PORT SHELL PLATE RENEWAL	11-JUN-2005		15-MAY-2012		C/O - SP	C/O	
20	Stern Ramp Finger	12-JUN-2005		15-MAY-2012		C/O - SP	C/O	
21	PORT SHELL PLATE RENEWAL	13-JUN-2005		15-MAY-2012		SP	CHIEF OFFICER	
22	Elephants Foot Lashing Points	13-JUN-2005		15-MAY-2012		C/O - SP	C/O	
23	NO. 1 LIFEBOAT REPAIR	29-JUN-2012		15-MAY-2012		C/O - AAB	3/O	P 2
24	Co2 Bottle Location	12-MAR-2012	15-JUL-2012			SUPT - ABB 2/O		1 1
25	F'castle Deck Interior	29-MAR-2012	25-AUG-2012			SUPT - ABB C/O		1 3
26	F'castle deck winches	29-APR-2012	30-JUN-2012			SUPT - ABB C/E		1 3

Overview

The Instruction is then used to initiate a new item in the ships' defect list

REFMAN's Ship Instruction & Feedback module has been designed to provide a simple means of ensuring that defects and other jobs which have been identified by the Superintendent or which have been brought to the Superintendents' attention (after an audit or ship inspection for example) are recorded and dealt with via REFMAN's Shipboard Defect Recording system onboard.

This is achieved by providing the Superintendent with the facility to send "instructions" to the ship which ship's staff can then use to automatically initiate new items in REFMAN's Shipboard Defect Recording system.

Jobs initiated in the Shipboard Defect Recording module in this way are automatically cross-referenced

with the original instruction so that it is easy for ship's staff to track instructions and to check which have been processed and added to the ship's Defect List, which have been completed and which are still outstanding.

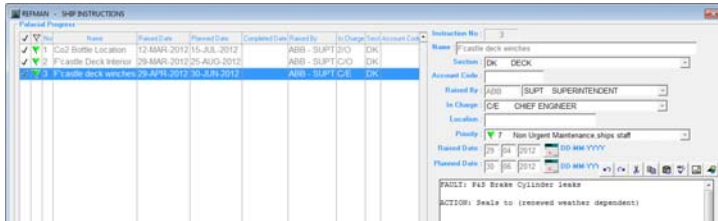
When used in conjunction with REFMAN's Shipboard Defect Status Monitoring module in the office, the Superintendent can also easily check the status of each Instruction and see which are overdue.

Used in this way it provides a comprehensive system for dealing with defects identified during ship inspections/audits, *ad hoc* defects and or jobs that are identified following a Superintendents visit to a ship. Most importantly it provides a means of ensuring that nothing is overlooked and every item is dealt with.

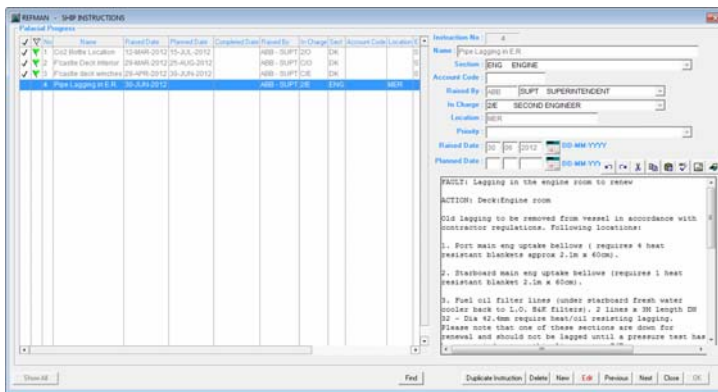
REFMAN – Ship Instruction & Feedback Module in the office.

Provides the Superintendent with the means to create a list of “instructions” in the office that relate to defects or jobs which the Superintendent wants the ships’ staff to record and deal with via REFMAN’s Shipboard Defect Recording module onboard.

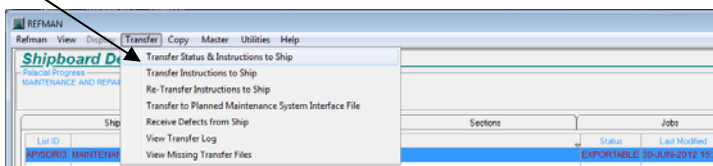
An instruction can just be a simple one-line item to act as a “prompt” or “reminder” to ships’ staff to record an item that has previously been raised or discussed:



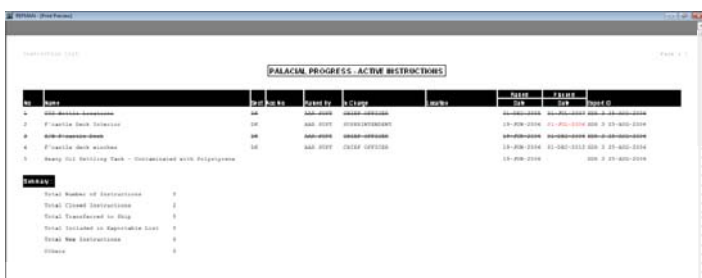
Alternatively, it can contain detailed instructions about the actions required to rectify a known defect or deficiency:



Instructions are transferred to the ship automatically when a routine “Status” transfer is made from REFMAN’s Shipboard Defect Status Monitoring module. Or they can be transferred separately if a status transfer is not due.

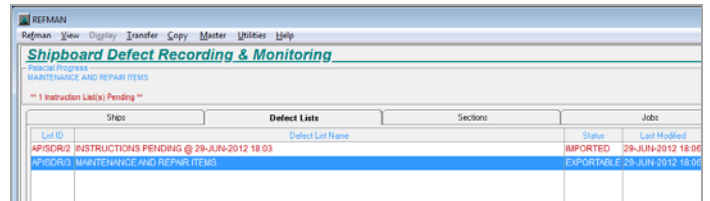


At any time a printed list of instructions can be produced along with a summary showing the total number of instructions and the numbers that have been completed, transferred, processed onboard, etc.

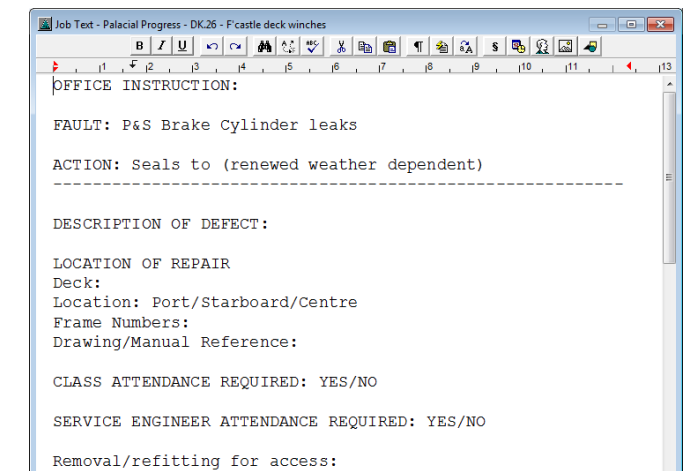


REFMAN – Ship Instruction & Feedback Module onboard.

When new “instructions” are received onboard, they appear as “Pending Items” in the defect list to alerts ships’ staff to the new “instruction”:

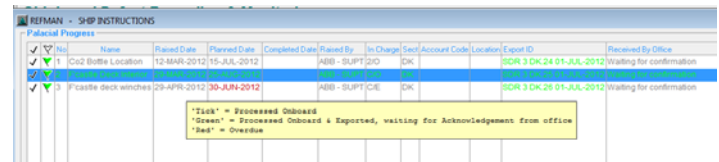


To “clear” the pending item from the list, each new instruction has to be assigned into the ships main defect list. Once in the main defect list, ships’ staff can add a full description of the work, insert drawings or images, set tag codes and attach files, in the same way as they would for a new defect or job which is initiated manually.



These defects are then transferred back to the office in the normal way, along with their original Instruction reference where they can be monitored and/or included in a drydock specification.

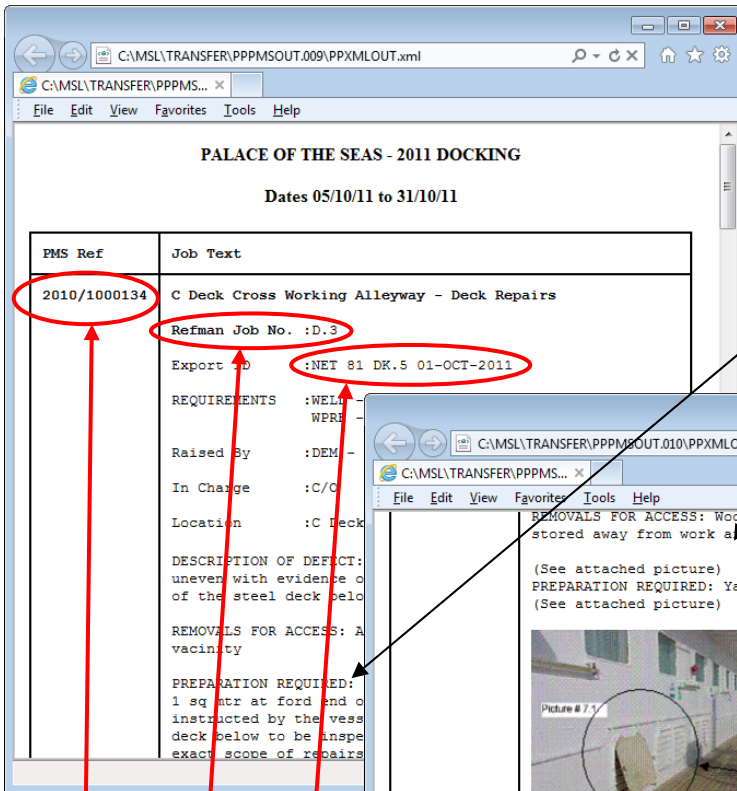
The instructions can also be displayed in a list on the screen onboard in exactly the same way as they can in the office.



Instructions that have been “processed” onboard and have already been included in a defect list are shown with a “tick”. Once transferred to the office an “Export ID” is added which will appear ‘green’ until they have been acknowledged by the office. Items that have been completed are shown with a green “tick” and items that are overdue have the “Planned Date” shown in red.

In this way, both Superintendent and Ships’ staff can see the status of each Instruction that has been issued.

System Requirements: As per REFMAN’s Specification Generator or Shipboard Defect Recording module as appropriate.



PMS output from REFMAN for jobs which have a PMS reference

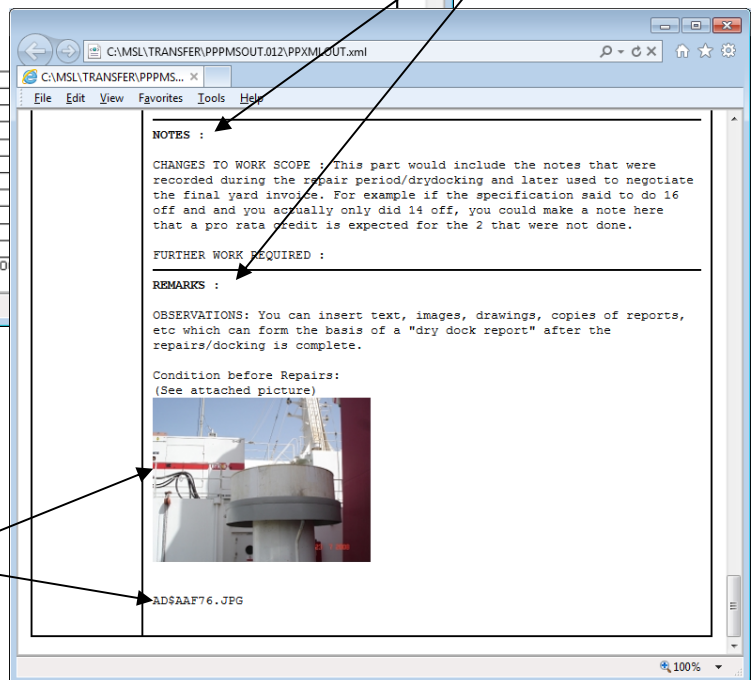
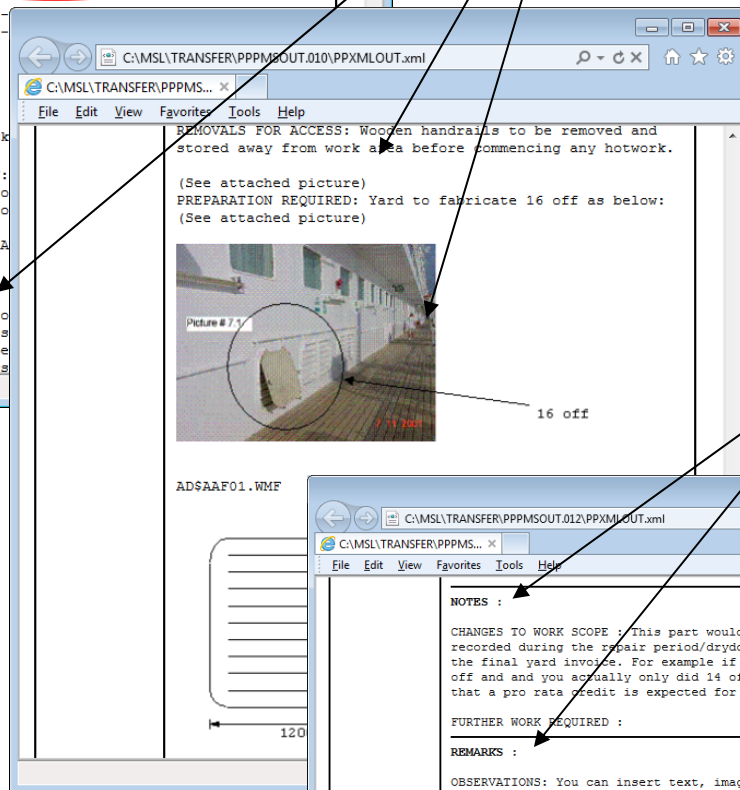
Original Job Description Text, Photographs and any Drawings that were sent to the shipyard for Quotation.

PMS output from REFMAN for Jobs which also have "Notes" for cost and Progress and / or "Remarks" for the Drydocking Report.

PMS Reference Work Order No., Job No., or Task No. from your Planned Maintenance System

Job Number from the Specification

Export ID from the ships' original Defect List



PMS "Notes" & "Remarks" output

"Notes" about what was actually done and "Remarks" about the condition of the equipment which have been recorded by the Superintendent during the Refit, Drydocking or Repair Period. Both of these can include Images, Photographs, Drawings, copies of Condition Reports, etc.

Overview

This interface is designed to help reduce the amount of work needed after a docking to reconcile the information which is held about jobs in a REFMAN Drydock or Refit Specification, with the records which need to be maintained by an onboard Planned Maintenance System (PMS). In particular, it is designed to make it easier for ships' staff to update the PMS Maintenance History, which in practice, often contains little or no information about jobs completed in a Drydock or Refit.

With this module, when a defect or job is recorded in REFMAN which relates to equipment normally maintained under a PMS, a Reference Number can be recorded which cross references to the PMS (i.e. Work Order, Job or Task No., etc). This reference makes it easy to identify PMS related work in REFMAN, but more importantly, at the end of a Drydock or Refit it can be used to extract all of the information which is held about jobs in REFMAN so that this can be used to update the PMS Maintenance History.

“Manual” Interface to your PMS

Each time a defect is recorded onboard or a job is added to a specification in the office, an option is available to allow a “Reference” to the corresponding Work Order, Job or Task in the Planned Maintenance System to be entered.

“Planned Maintenance Ref” can be replaced by Work Order No., Job No. or Task No. to reflect whichever Planned Maintenance System you use.

This PMS Reference will be stored permanently against the job and will be transferred to the office as part of the normal transfer process. This means that it can be displayed on the screen (both in the office and onboard) alongside the normal REFMAN job information.

Job	U/C. Code	Job Description	PMS
4 D Deck Stores Cross Alleyway - Deck Repairs	WLDW	WELDWPRE NET #1 DK 7 01-OCT-2001	
7 Engine Room Escapator Flat Deck to Repair	DDD	DTPFIREHOBELLOYUBON	
1 Funnel Base to Repair	DEM	C Deck WELDWPRE NET #1 DK 5 01-OCT-2001	
3 C Deck Cross Working Alleyway - Deck Repairs	WLDW	WELDWPRE NET #1 DK 5 01-OCT-2001	
5 Fan Room Louvre Repairs	DDD	FIRESTAG/VNOT	
8 Lifeboat Control Centre to Repair	DDD	FIRESTAG/VNOT	

Sort jobs by PMS Reference by clicking on the ‘PMS’ column heading.

The PMS Reference will also be printed as part of the job description.

Job	U/C. Code	Job Description
D.2	DDD	Funnel Deck Upstands Port & Starboard to Repair (Revised 16-SEP-1996 19:16)

REQUIREMENTS: Vigilant Fire Watch During Hot Work
Stepping to erect & remove as required
Vessel Hot Work Permit

PMS REF : 2011/1000394
IN CHARGE : Chief Officer
LOCATION : Funnel Deck

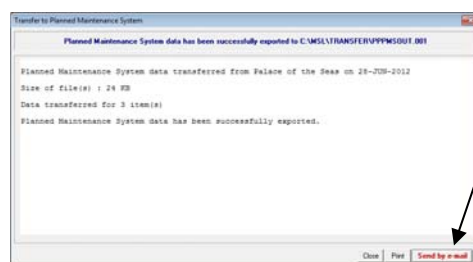
There is also an option to show the PMS Reference on a Table of Contents to provide an index to all the PMS related work.

	Instruc/PMS Reference	Page
Refit Contracts - General Conditions		1
Ship Particulars		2
A Drydocking & Wharfrage		4
A.1 Pilotage and Tugs		4
A.2 Drydocking the Vessel		5
B Off Hire Charges & Service During Annual Refit		7
B.1 Operations Room		7
B.2 Shore Steam Supply		8
C External Sealing & Painting		9
C.1 Underwater Area Preparation and		10
C.2 Boottop Area Preparation and		11
D Structural Steelwork, Alloy & Open Deck Covering		12
D.1 Funnel Base to Repair		12
D.2 Funnel Deck Upstands Port & Starb	2011/1000394	13
D.3 C Deck Cross Working Alleyway - 1		14
D.4 D Deck Stores Cross Alleyway - DIF	2011/1000234	15
D.5 Fan Room Louvre Repairs	IP - 22010/100012	14

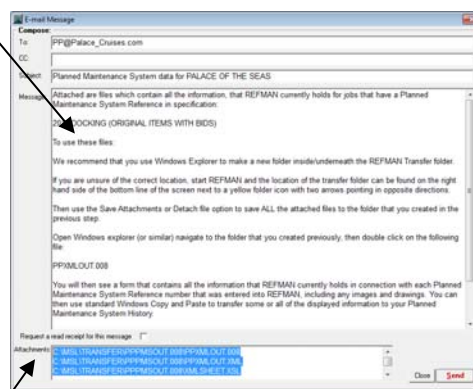
A new option “Transfer to PMS” has been provided for use at the end of a Drydock or Refit which extracts all of the information which REFMAN holds (job Description, cost Notes, condition Remarks along with all associated drawings, photographs, images, etc.) for jobs that have a PMS Reference. This information is written out to a file that can be sent to the ship and used as a source document to update the PMS Maintenance History.

Ship	Job	Status	Last Modified	Print
PP/OPS/1	S...		03-SEP-2010 07:23	
PP/OPS/2	RIDING SQUAD - WORK LIST		15-NOV-2011 17:45	
PP/OPS/3	ITEMS FOR INSPECTION/DISCUSSION WITH C/E		15-NOV-2011 17:45	
PP/OPS/4	2007 DOCKING	COMPLETED	15-SEP-2007 17:30	30-SEP-07
PP/IMQ/2	SECOND SPECIAL DRY DOCKING 2010		08-MAR-2011 16:03	21-OCT-10
PP/OPS/13	2011 DOCKING		28-JUN-2012 08:34	05-OCT-12

A “Send by e-mail” option is also provided which automatically creates an e-mail to the ship and attaches the necessary files to update the PMS Maintenance History:



The e-mail contains full instructions to tell ships’ staff how to use the attached files:



Files which needed to update the Maintenance History are attached to the message automatically.

Ships’ staff can then “manually” update the PMS Maintenance History using standard Windows “Copy & Paste” functions to transfer the information that has been extracted from REFMAN.

“Automatic” Interface to your PMS

It is possible to fully automatic this interface so that a REFMAN job can be initiated automatically from within a PMS and the relevant information passed to REFMAN. Also, so that the output from REFMAN will be used automatically to update the PMS Maintenance History onboard. However this needs to be developed in co-operation with the supplier of the specific Planned Maintenance System that you use.

System Requirements: As per REFMAN’s Shipboard Defect Recording or Specification Generator module as appropriate.

All Drawing functions available from standard toolbars

Simply click the button on the toolbar for the function you require then click to the position on the drawing where you want to draw.

Dimensions

Add dimension lines and sizes with a single button click.

Zoom control for display

REFDRAW has zoom levels from full page width up to 1000%. Allows you to zoom in to draw close detail and zoom out to see the complete drawing.

Page format & drawing size

REFDRAW automatically sets the available size of the drawing area to match the available space on the REFMAN Job Text, Job Notes or Section Preface page. On completion, REFDRAW automatically inserts the drawings into the correct position on the Specification page.

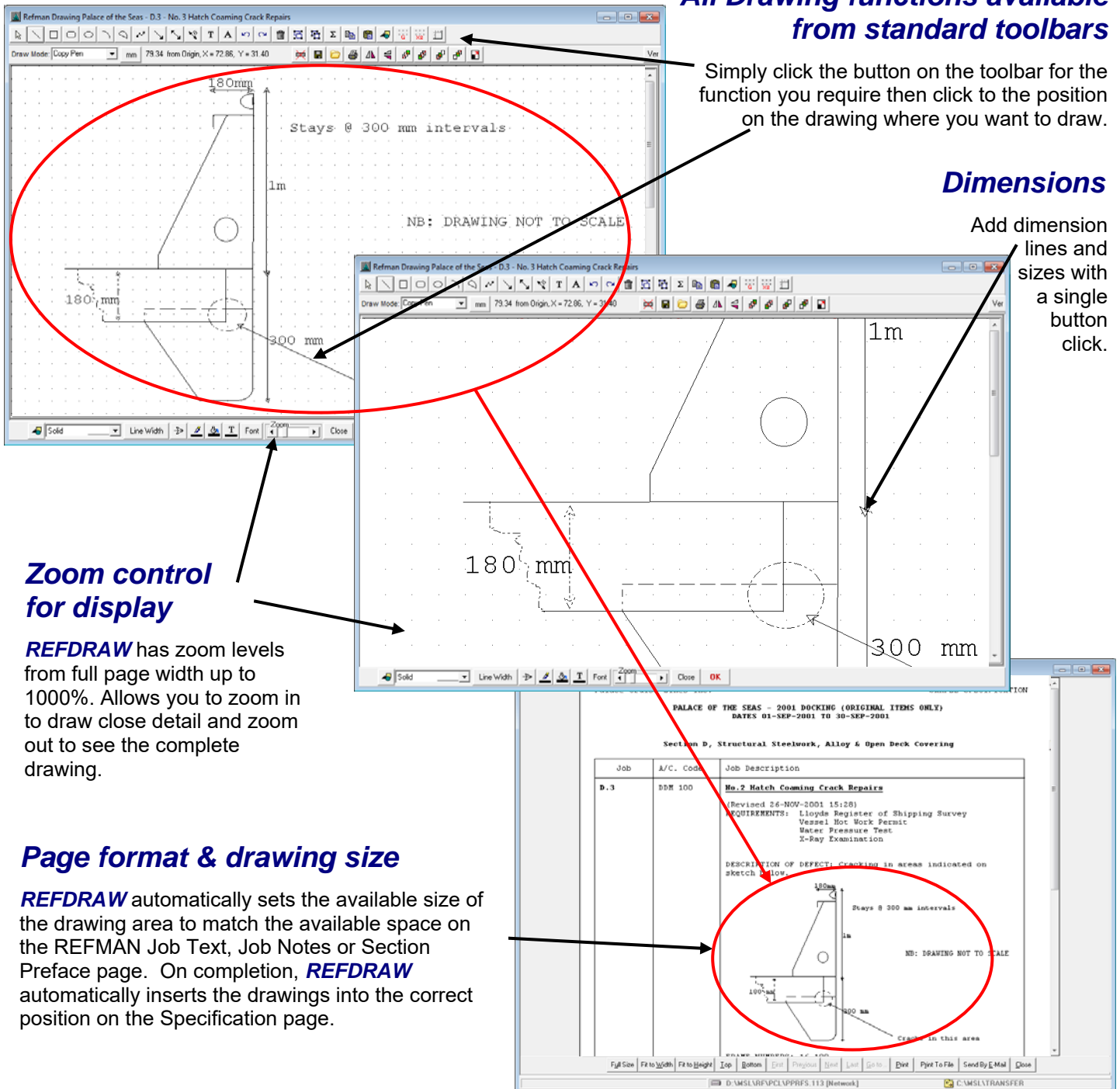
Overview

REFDRAW is a drawing tool designed especially for use in conjunction with REFMAN's Specification Generator and Shipboard Defect Recording modules. It has been designed to be used by anyone who needs to insert images or create simple drawings in a REFMAN Job or Defect Description.

The emphasis throughout REFDRAW is on speed, ease of use and minimising file size. All the main functions are accessible either via buttons on a toolbar or directly from a standard mouse.


REFDRAW allows users to create drawings using tools to insert lines, shapes and images/pictures. Items can be referenced individually and moved, re-sized or rotated in the drawing area.

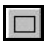
REFDRAW automatically adjusts the size of the available drawing area to match the space that is available on the REFMAN specification page so that it automatically matches 'Full Page' & 'Box Format' Job Text, Job Notes, Job Remarks and Section Preface Text format page layouts.




REFDRAW – Refman’s Drawing Module


Main Program Features:


 - **Lines** – draw lines with control over thickness, colour, and style.

 - **Rectangles** – draw squares and rectangles of any size.


 - **Rounded Rectangles** – draw squares and rectangles with rounded corners of any size.


 - **Ellipses** – draw circles /ellipses of any size.


 - **Arc** – draw arcs of any size and length.


 - **Pie** – draw pie shapes of any size.


 - **Chord** - draw chord shapes of any size.


 - **Polyline** – draw polylines with an unlimited number of points.

 - **Polygon** – draw polygons with an unlimited number of points where the last point is automatically joined to the first point making a complete polygon.

 - **Text** – insert text which matches the text size and style used in the Specification or Defect List.

 - **Insert Pictures/Images** – .BMP, .JPG, .GIF, .PNG, .WMF, .EMF, .DXF (AutoCad) & PDF (Adobe Acrobat) format files. Other formats can be inserted via the Windows clipboard by using the Copy & Paste functions.

 - **Cropping** – to remove unwanted areas around inserted pictures and images.

 - **Dimension Lines** – insert dimension lines at any angle and length with arrows at both ends. Enter dimension text with control over positioning next to dimension line.

 - **Select** individual objects or range of objects.





 - **Select All** objects.

 - **Group** and **Ungroup** selected objects.


 - **Delete** selected objects.

 - **Move** and **resize** selected objects.



 - **Rotate** objects. Control over rotation angle and centre of rotation.




    - **Layers** –move layers to top, bottom, up one layer or down one layer.


 - **Copy** selected objects.


 - **Paste** objects that have been copied in the drawing module or have been copied in external software. Use this function to insert pictures and text from other software.


  - **Mirror** or **flip** objects horizontally or vertically


  - **Undo** and **Redo** function.

   - **Colour** – use standard colours or define custom colours for lines, filling and text.

 - **Page Size.** Switch between ‘box format’ and ‘full page’ layout

 - **Unit of measurement.** Display cursor position and distance from origin (line length) in Inches or in millimetres.

 - Drawing elements & images automatically ‘**snap**’ to grid points for accurate alignment.

 - Drawing area displayed with scalable background “**grid**” for easy and accurate positioning/alignment of drawing elements.

 - **Not to Scale** – inserts a ‘Not to Scale’ label

Line Style - select from solid lines, dash lines, dotted lines, or combinations of these.

Line Width - select from 1 to 6 point width.

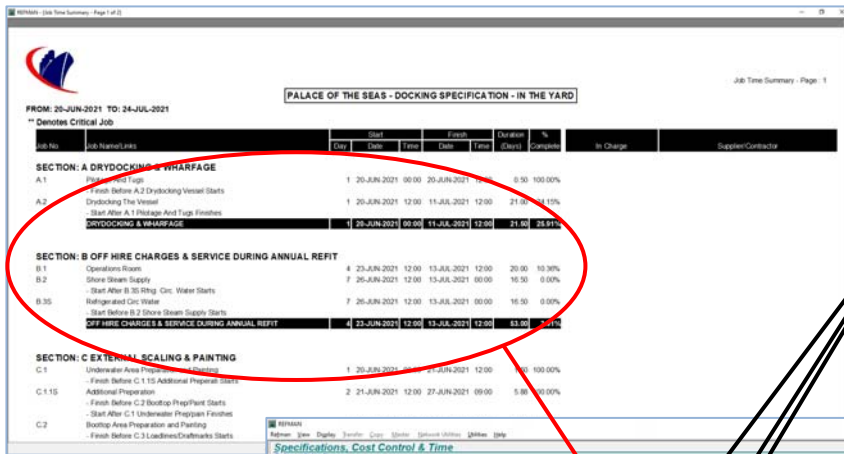
Fill Pattern - includes: transparent, solid, diagonal lines, and vertical lines. Used with rectangles, ellipses, circles, pie, chords and polygons.

Zoom – from full screen width to 1000%.

Drawing Mode – specify the way in which an objects attributes are combined with objects already in the drawing.

Built in File Size Reduction Aids – Includes on screen sizing guide points & pop-up tips to reduce the size of inserted images; image save options which ignore the source file resolution and only save the minimum amount of information which is required to reproduce the image at the size it was inserted at and optional company-wide file size limits which prevent images which exceed that limit being inserted.

System Requirements: As per REFMAN’s Specification Generator or Shipboard Defect Recording module as appropriate.



Automatic scheduling of related Jobs

Jobs that are related can be "linked" together so that a change in the timing of one job can automatically update the schedule for another.

Time scales & cost information

Available side by side in all cost views.

Choice of Timescales

Months & Weeks
Weeks & Days
Days & Quarters
Days & Hours

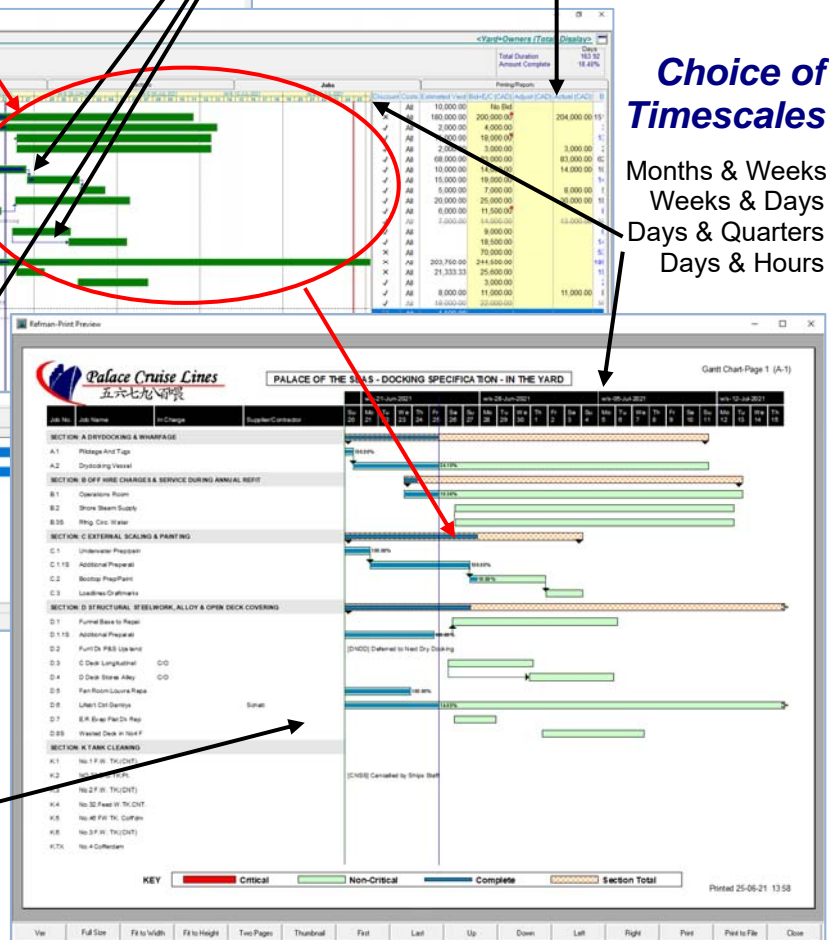
Progress of each Job displayed on screen

See at a glance which jobs are complete, which have not been started and which are in progress along with the proportion of work that has been completed.

Printed time bar (Gantt) chart

Generated automatically with choice of presentation (with/without links, with/without grid lines, etc.).

Overview



REFMAN's Time Management Module has been designed to provide people who are not project management 'experts' with a quick and simple means of keeping track of the progress of jobs during a repair period.

To achieve this, REFMAN automatically creates the framework for scheduling jobs and project planning as the specification is created and is updated automatically whenever jobs are added, deleted or cancelled from that specification. REFMAN also provides a means by which shipyards can supply the estimated start dates and durations for each job electronically so that these can be loaded automatically. Times and durations for other jobs

which are to be carried out by sub-contractors, specialists or ship's crew can then be added. REFMAN's Time Management module then combines this to produce a simple time bar (Gantt) chart which gives a pictorial representation of when each job is expected to start, how long it should take and when it should be finished.

All the Superintendent needs to do to keep this up to date during the repair period is to record which jobs are complete, which jobs are behind schedule and use the built-in "Update" option to set an approximate percentage complete for the remainder. The built-in "Reschedule" option can then be used to produce an up to date time bar (Gantt) chart showing exactly what is outstanding.

REFMAN - Time Management Module

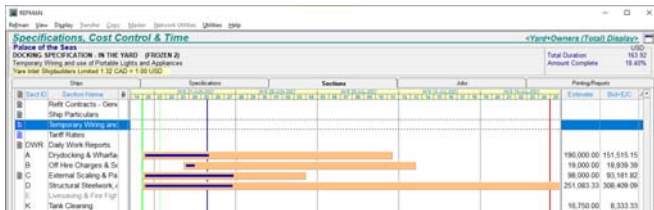
... ideal companion to REFMAN's Specification Generator & Cost Control Modules.

Provides the Superintendent or Port Engineer with facilities to schedule and monitor the progress of all jobs in a REFMAN specification. For each job it is possible to record start date & duration and optionally, specify which jobs must be completed before the next job can start, which jobs must at least have started before the next job can start and which jobs must be finished before the next job can be completed.

- If an earlier job is re-scheduled and this affects other later jobs (i.e. "linked" jobs) then the later jobs will be re-scheduled automatically. If a later job is re-scheduled which is affected by a link to an earlier job, the user will be prompted whether or not to remove the link.

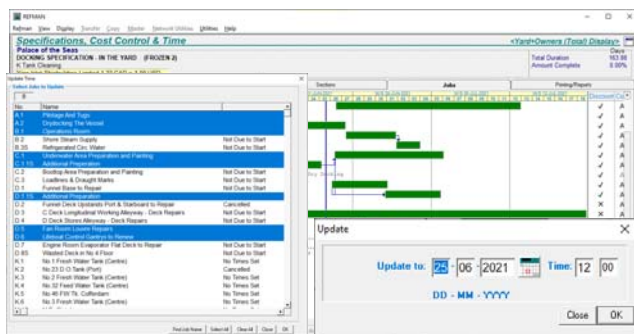
Features

- Complete monitoring of the progress of jobs without the need to learn complicated project management software.



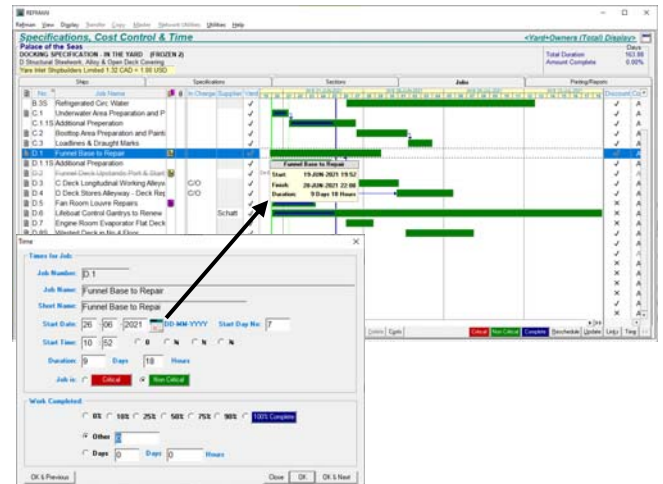
Section progress summary shows overall progress (on its own or alongside cost information in Cost Views).

- Facility to enable the Shipyard to supply the estimated duration and start day (an actual date or a "day number" during the docking) electronically. This information can be requested as part of REFMAN's electronic 'Yard Quotation Package' and loaded up automatically.
- Schedule and monitor jobs carried out by owner's contractors, other specialists and ships crew.
- Full range of links including "later job cannot start before earlier job finishes", "later job cannot start before earlier job starts" and "later job cannot finish before earlier job finishes".



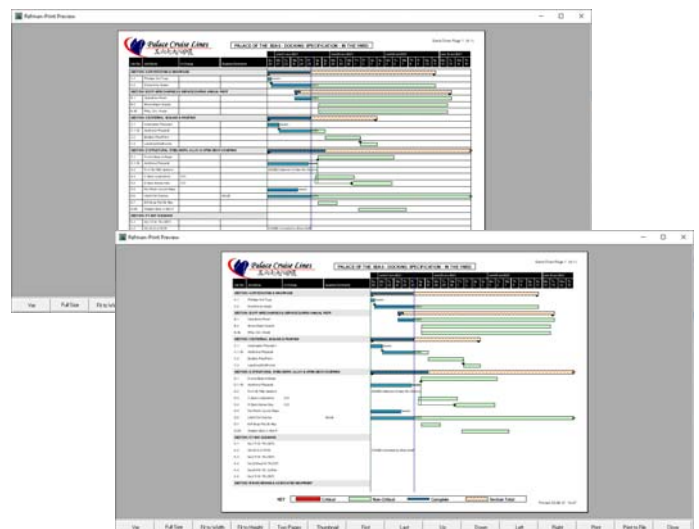
See the progress of each individual job with automatic updating.

- Automatic updating of "Percentage Complete" for jobs that are "on schedule". Update just selected jobs; "all" jobs in a single section; all jobs in "selected" sections or all jobs in "all" sections in a specification.
- Automatic "Rescheduling" of incomplete jobs. Reschedule just selected jobs; "all" jobs in a single section; all jobs in "selected" sections or all jobs in "all" sections in a specification.



Easy to use, just "drag and drop" to set times & durations.

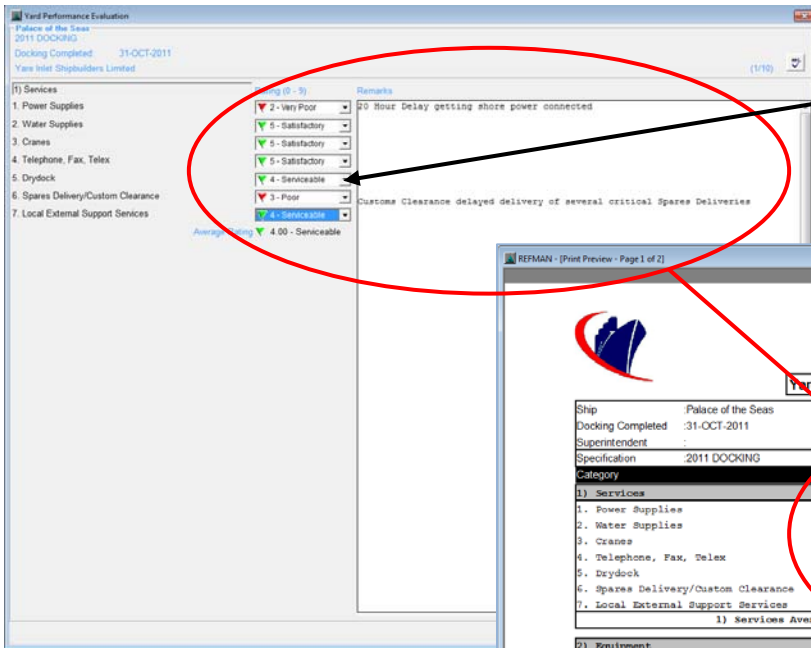
- Choice of conventional numerical input for "dates & times" or simple to use on-screen "drag and drop" for both scheduling jobs and setting durations.
- On-Screen indicator in section view with pop-up information box to indicate that one job is linked to other jobs in different sections of the specification.
- Automatic Generation of time bar (Gantt) chart for the entire specification or just the jobs in a particular section.



Options to control appearance and scale of printed time (Gantt) chart.

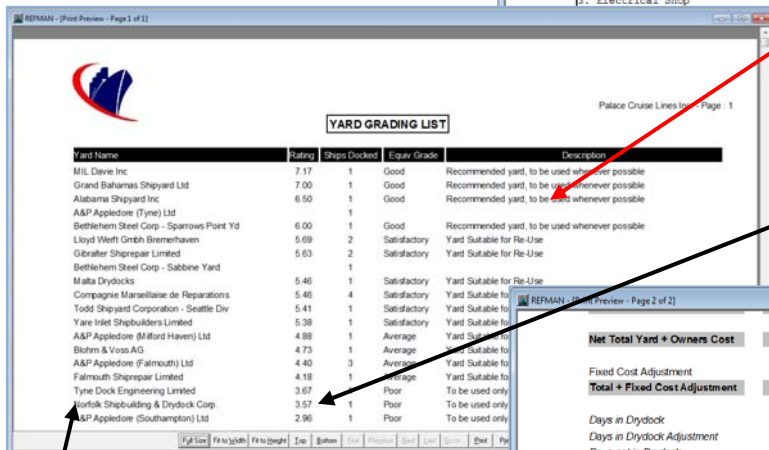
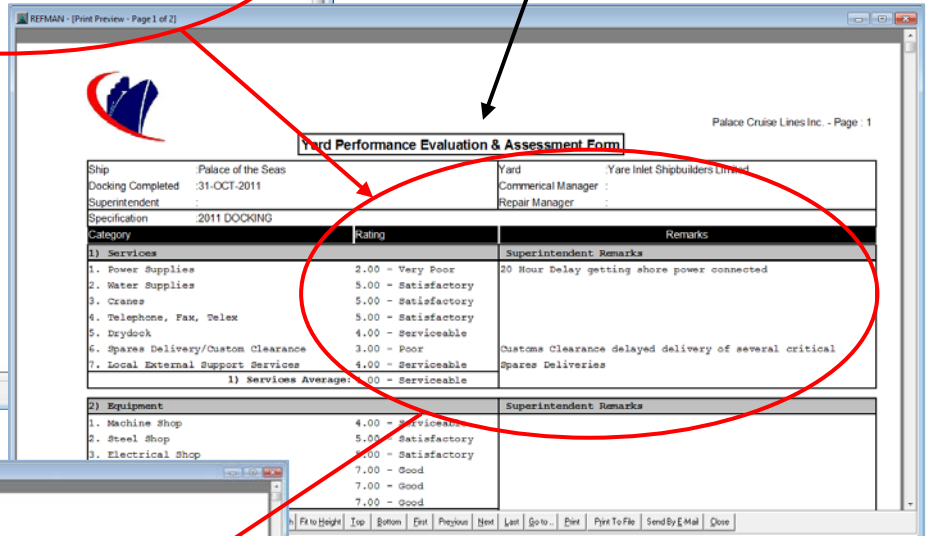
- Flexible printing options which allow time bar (Gantt) chart to be printed with a choice of timescales, with or without links & with and without "gridlines" on the text and/or on the time bars.

System Requirements: As per REFMAN's Specification Generator or Cost Control modules.



Superintendent "rates" the shipyard's performance

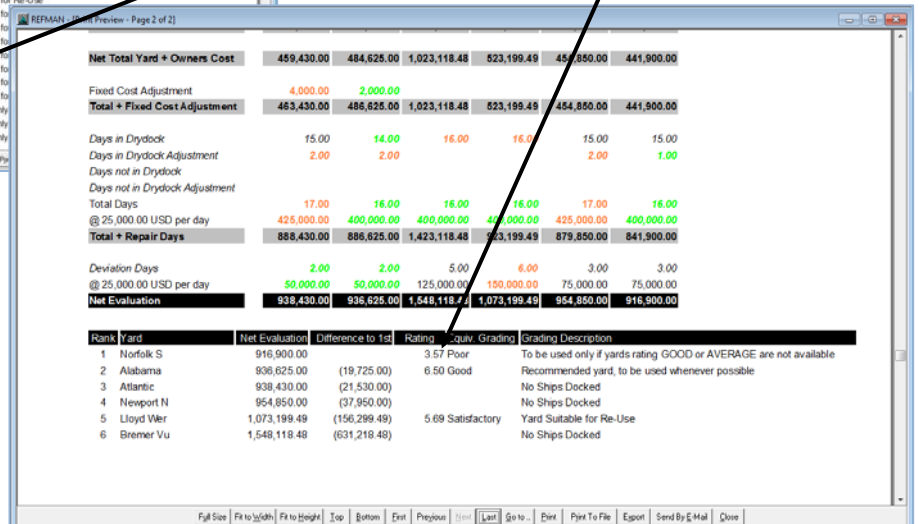
Simple on screen form for the Superintendent to record the "Yard Performance Evaluation" under user defined headings.



Overall rating shown on Yard Bid Comparison.

Ranked list based on shipyard's overall performance

Based on all previous dockings, or last "X" dockings or all dockings since a specified date.



Overview

REFMAN's Shipyard Performance Evaluation Module allows the Superintendent to "rate" a yard's performance during and after a docking. Ratings can be given under any number of user defined headings (for example, Facilities, Services, Equipment, Response Speed, Cooperation, Communication, Engine Work, Steel Work, Safety, Prices, etc.) and the Superintendent can also record comments to qualify these ratings. On completion

of the docking, the completed ratings are stored centrally so that an overall average rating can be produced for each shipyard. This overall average can also be shown on the Yard Bid Comparison Report to assist in deciding which yard to nominate. You can also produce a ranked list which shows yards in order of their overall average performance which can help in deciding which yards to invite to tender when sending a specification out.

REFMAN – Shipyard Performance Evaluation Module

Provides a simple means of “grading” or “ranking” shipyards according to their performance in past dockings. Each time a ship is drydocked, the Superintendent completes a simple form giving the yard a numerical “rating” or “score” against various aspects of the Yards performance.

The form can be accessed from the main Cost Control screen which is used by the Superintendent to track costs so the form can easily be completed during the actual docking whilst the “experience” is still “fresh in the mind”.

Item	Specs	Estimate	Actual	Diff	Specs	Estimate	Actual	Diff
A	Temporary Wiring and Drydocking & Wharfs	190,000.00	204,708.29	208,802.46	208,802.46	21,400.00	230,202.46	184,161.97
B	Off Hire Charges & St	19,000.00	25,588.54	3,070.62	25,588.54	600.00	26,088.54	20,868.47
C	External Scaling & Pa	98,000.00	125,895.80	107,471.85	126,919.14	79,000.00	205,919.14	205,919.14
D	Structural Steelwork	37,000.00	82,906.86	44,012.26	87,001.02	5,000.00	92,001.02	42,988.74
E	Livesaving & Fire Figh							
K	Tank Cleaning	8,000.00	23,541.45	11,258.96	23,541.45	1,000.00	24,541.45	
L	Deck Equipment & Fit							
M	Internal Painting							
N	Plumbing							
O	Main Engine & Associ	5,731.83			5,731.83		5,731.83	5,731.83
P	Boilers & Associated							
Q	Specification Total	352,000.00	468,372.57	374,616.17	477,584.44	106,900.00	584,484.44	459,670.15
R	Total Discount				115,864.81		115,864.81	101,822.04
S	Spec Net of Discount				361,719.83	106,900.00	468,619.83	358,048.12
T	Budget Allocation				1,110,000.00	-28,000.00	1,138,000.00	1,023,000.00
U	Budget Remaining				748,280.17	-78,900.00	669,380.17	664,951.88

Items such as ratings relating to prices for additional work and negotiating the final bill for example can be completed later once Superintendent returns to the office.

Yard Performance Evaluation Form for Palace of the Seas. The form includes sections for Superintendent Name, Rating Summary, and Equivalent Grade. The Average Superintendent Rating is 5.33 (Satisfactory). A red circle highlights the 'Mark as Complete' button at the bottom right.

Once all the ratings have been recorded and any qualifying comments have been added, the form is “marked as complete” which posts the results against the Shipyard in the REFMAN Master database. These results are then included when calculating the overall Average Rating.

Yard	Evaluations	Rating	Category	Ship Docked	Rating
Atlantic Marine Inc - Mobile					
A&P Applidore (Aberdeen) Ltd					
A&P Applidore (Chatham) Ltd					
A&P Applidore (Dover) Ltd	4.40	3	Average		
A&P Applidore (Falmouth) Ltd	4.88	1	Average		
A&P Applidore (Milford Haven) Ltd	2.96	1	Poor		
A&P Applidore (Southampton) Ltd					
A&P Applidore (Tyne) Ltd					
Alabama Shipyard Inc	6.50	1	Good		
Blohm & Voss AG	4.73	1	Average		
Bethlehem Steel Corporation					
Bethlehem Steel Corp - Sparrows Point Yd					
Bethlehem Steel Corp - Sabbins Yard	6.00	1	Good		

All the Evaluations that have been recorded for a particular yard are listed against the shipyard in the Evaluation module where they can be reviewed and if necessary amended. For larger companies, the module can be setup to require Evaluations to be reviewed and “Approved” by the Fleet/Technical manager or other responsible person before they can be included in the overall rating calculation.

Yard	Evaluations	Rating	Category	Item	Rating
Queen's Palace					
Palace of the Seas					
Majestic Palace					
Palace of America					

Options are provided to print Detailed Evaluations, Evaluation Comparison and Grading Lists.

Superintendent Rating	Palace	Palace S	Palace	Palace A
Average Rating	5.48	5.39	5.83	5.21
Number of Evaluations	3	1	1	1

Category	A&P Falmouth	A&P Milne	A&P Sparrows	A&P Tyne	Alabama	Blohm & Voss	Beth. Steel
Superintendent Rating	4.40	4.88	2.96		6.50	4.73	6.00
Number of Evaluations	3	1	1	1	1	1	1

Yard Name	Rating	Ship Docked	Equip Grade	Description
Mil. Dover Inc	7.17	1	Good	Recommended yard, to be used whenever possible
Grand Bahamas Shipyard Ltd	7.50	1	Good	Recommended yard, to be used whenever possible
Alabama Shipyard Inc	6.50	1	Good	Recommended yard, to be used whenever possible
A&P Applidore (Tyne) Ltd	6.00	1	Good	Recommended yard, to be used whenever possible
Bethlehem Steel Corp - Sparrows Point Yd	5.83	2	Satisfactory	Yard Suitable for Re-Use
Lloyd Werth GmbH Bremerhaven	5.69	2	Satisfactory	Yard Suitable for Re-Use
Gibrater Shengarc Limited	5.63	2	Satisfactory	Yard Suitable for Re-Use
Bethlehem Steel Corp - Sabbins Yard	6.46	1	Satisfactory	Yard Suitable for Re-Use
Milva Drydock				

The Main Category headings, Item sub-headings, Rating/Score Descriptions and Equivalent Gradings can be tailored to suit each company. Alternatively, a standard Evaluation setup can be supplied.

Annotations on the REFMAN Yard Performance Evaluation form:

- Category Headings:** Points to the 'Services' category heading.
- Category/Item Sub-Headings:** Points to the '1) Services' item sub-heading.
- Rating/Scores, Descriptions & Equivalent Grades:** Points to the '1) Services' row, highlighting the rating (4.00), description (Satisfactory), and equivalent grade (Satisfactory).

System Requirements: As per REFMAN’s Specification Generator or Cost Control module as appropriate.

Contractor display

Bids from Contractors are recorded in the Contractor's own currency or can be loaded electronically when the Contractor quotes using Refman's Contractor Quotation Package.

Compare bids from contractors directly on the screen

Bids compared in your own base currency (can include your own contingency to allow for any exclusions) with the option to show/hide the original quotation in the Contractor's own currency

No.	Job Name	Yard	% Done	Discount	Costs	Bid+E/C (SGD)	Bid+E/C	Account Code
1	Passenger Cabin Bathrooms to Retile	✓	✓	✓	All	121,635.00	92,851.15	DDG
2	Passenger Cabin Dressing Tables to Refurbish	✓	✓	✓	All	82,215.00	62,759.54	DDG
3	Light Fittings to Spray Paint	✓	✓	✓	All	1,687.00	1,287.79	DDG
3.1	Light Fittings to paint incr'd by 50 off	✓	✓	✓	All	1,350.00	1,030.53	
4	Cabins on A & F Decks Interiors to Paint	✓	✓	✓	All	110,025.00	83,988.55	DDG
4.1	50 off additional cabins to paint	✓	✓	✓	All	27,000.00	20,610.69	
4.2	Bottle opener removed to 64 cabins holes to fill	✓	✓	✓	All	3,645.00	2,782.44	
5	Promenade Deck Cabins to Paint and Vinyl	✓	✓	✓	All	38,800.00	29,618.32	DDG

No.	Job Name	CR Us Inc Total (EUR) 0.81	CR Us Inc	CSI Total (SGD) 1.31	CSI	PAX Int. Total (USD) 1.00	PAX Int.
1	Passenger Cabin Bathrooms to Retile	90,100.00	111,234.57	121,635.00	92,851.15	112,625.00	112,625.00
2	Passenger Cabin Dressing Tables to Refurbish	60,900.00	75,185.19	82,215.00	62,759.54	76,125.00	76,125.00
3	Light Fittings to Spray Paint	1,250.00	1,543.21	1,687.50	1,288.17	1,562.50	1,562.50
			1,234.57	1,350.00	1,030.53	1,250.00	1,250.00
			100,817.28	110,025.00	83,988.55	101,875.00	101,875.00
			24,691.36	27,000.00	20,610.69	25,000.00	25,000.00
			3,333.33	3,645.00	2,782.44	3,375.00	3,375.00
			35,555.56	38,800.00	29,618.32	36,000.00	36,000.00
			1,728.40	1,890.00	1,442.75	1,750.00	1,750.00
			51,604.94	56,430.00	43,076.34	52,250.00	52,250.00
			39,506.17	43,200.00	32,977.10	40,000.00	40,000.00
			34,567.90	37,800.00	28,854.96	35,000.00	35,000.00
			38,271.60	41,850.00	31,946.56	38,750.00	38,750.00
			36,419.75	39,825.00	30,400.76	36,875.00	36,875.00
			1,851.85	2,025.00	1,545.80	1,875.00	1,875.00
			987.65	1,080.00	824.43	1,000.00	1,000.00
			558,333.33	610,537.50	466,059.16	569,412.50	569,412.50

Automatic contractor comparison

REFMAN generates a contractor bid comparison report, in your own base currency which can automatically highlight the 'most expensive', 'least expensive' quote, etc.

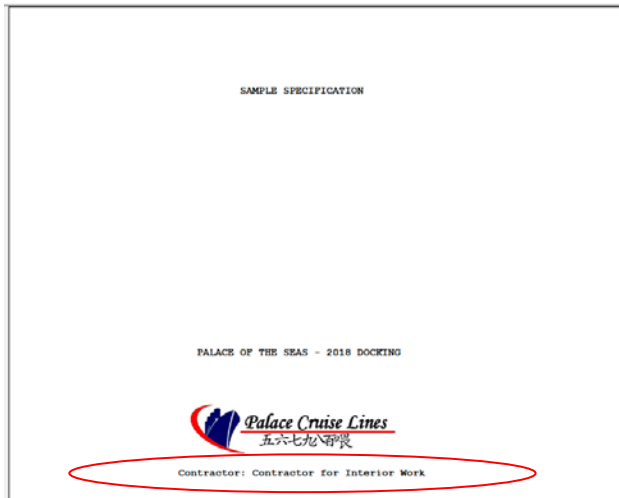
Overview

REFMAN's Contractor Comparison Module extends the facilities of the Cost Control Module to allow the loading/recording of bids/quotations from specialist Contractors so that these can be compared against one another and/or compared against quotations from Yards, on a job by job basis in a mix of currencies. Quotations from equipment/spare parts suppliers can also be compared in the same way if required.

The cost of owners arranged contractors will still be included in the specification as an estimated cost in your own base currency under your chosen Owner's Cost Category, exactly the same way as they were previously. However with the Contractor Comparison Module, these costs can be obtained directly from the Contractor's original bid/quotation without the need for a "one-off" manual conversion to your own base currency.

REFMAN – Contractor Comparison

The Superintendent or Port Engineer first generates a specification which contains only the jobs which a specialist Contractor is being asked to quote for.



Specification for a particular type of specialist Contractor.

A Contractor Quotation Package can then be generated which contains both the specification (in PDF format) and a small program to allow the Contractor to enter their prices. This enables prices to be returned electronically and then loaded directly into the specification. Alternatively, the specification can be printed (output to PDF format with option to merge attached files built in) and sent to the Contractor, but in this case the prices you receive back would need to be entered manually.

Each Contractor has their own exchange rate.

If the Contractor declines to bid for all or part of a job, then the received bid can be adjusted to allow for this by entering an exclusion/contingency so that bids can still be compared on a "like for like" basis.

Formulas to calculate Exclusion/Contingency (also formulas for Bid and Unit Price available if required).

Once Bids for each Contractor have been loaded/entered, they can then be compared on screen.

Compare Contractor Quotations against each other and/or against Yard Quotations if Contractors are quoting for the same work as Yards.

The "successful" Contractor is then set for the Job(s) they have been awarded under your preferred Owners Cost category, which then links the Estimated Owners Cost to that Contractor's original Quotation.

Contractor/Supplier list also shows total quotation for all the selected Jobs.

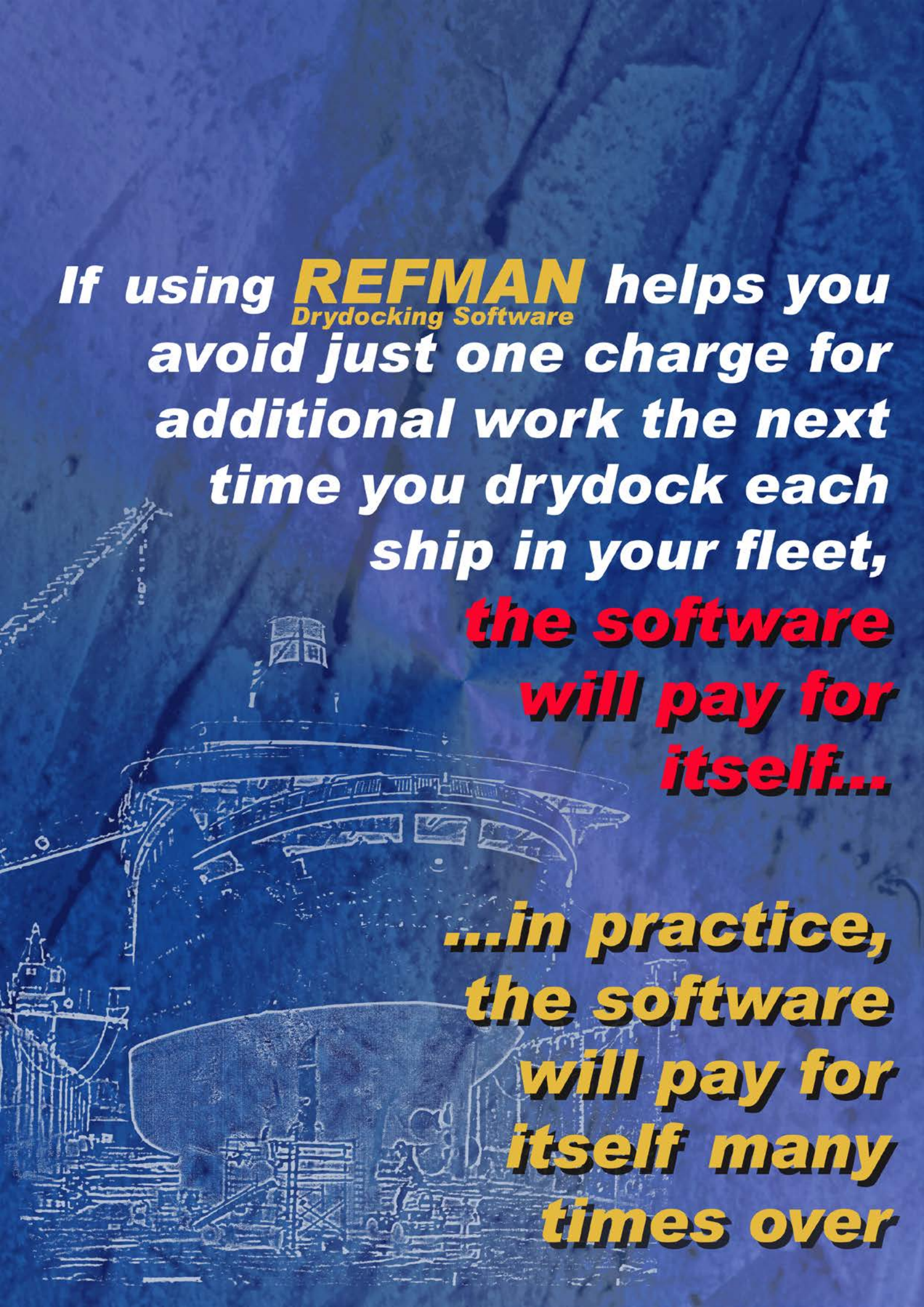
Contractor quotes can be linked to a particular yard so that they are only included as part of the costs for that particular yard, or they can be included regardless of which yard the ship eventually goes to (i.e. included for ALL Yards).

Setting the Successful Contractor for one Yard or for all Yards.

If the Contractor will do the work "instead" of the Yard, the program can automatically remove the Yard's Bid for these jobs. Alternatively, if the Contractor will do the work in conjunction with the Yard, the Contractor's bid will appear as an Owners Cost in addition to the Yard Cost.

Owners Cost is linked to Contractor bid using an editable formula which includes the Contractor's bid, discount (if quoted) and exchange rate.

System Requirements: As per REFMAN's Cost Control module.



If using **REFMAN** Drydocking Software helps you
avoid just one charge for
additional work the next
time you drydock each
ship in your fleet,
**the software
will pay for
itself...**

**...in practice,
the software
will pay for
itself many
times over**