

## Automatic scheduling of related Jobs

Jobs that are related can be "linked" together so that a change in the timing of one job can automatically update the schedule for another. Links in the same section are shown directly on screen whilst links to jobs in other sections are shown as "nodes" which expand to show a list of related jobs.

## Choice of Timescales

Months/Weeks  
Weeks/Days  
Days/Qtr Days  
Days/Hours

The image displays three screenshots of the REFMAN software interface. The top-left screenshot shows a 'Detailed Time Report' for 'Palace of the Seas - 2003 DOCKING' with a table of jobs and their progress. The top-right screenshot shows a Gantt chart view with a 'Time View' dropdown menu. The bottom-left screenshot shows a 'Links' window displaying dependencies between jobs. The bottom-right screenshot shows a printed Gantt chart with a legend for job status (Critical, Non-Critical, Suspended, Section Total).

**Progress of each Job displayed on screen**  
See at a glance which jobs are complete, which have not been started and which are in progress along with the proportion of work that has been completed.

**Printed time bar (Gantt) chart**  
Generated automatically with choice of presentation (with/without links, with/without grid lines, etc.).

## Overview

REFMAN's Time Management Module has been designed to provide people who are not project management 'experts' with a quick and simple means of keeping track of the progress of jobs during a repair period.

To achieve this, REFMAN's Time Management module provides the means for the shipyard themselves to supply the owner with estimated start dates and durations for each job as part of the yard's original bid. Times and durations can then be added for any 'owners' jobs which are to be carried out by sub-contractors or other specialists

Using this information, REFMAN's Time Management module can produce a simple time bar (Gantt) chart which gives a pictorial representation of when each job is expected to start, how long it should take and when it should be finished.

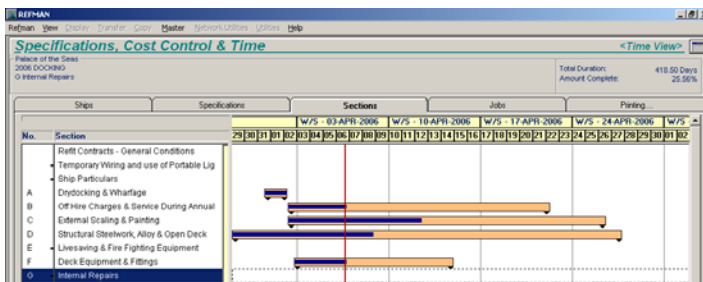
During the actual repair period, all the Superintendent has to do is note which jobs are complete and optionally, estimate the progress on jobs that are in hand. The program can then produce a summary showing the overall proportion of the work that has been completed and the proportion remaining, or it can produce a time bar (Gantt) chart that shows the same information pictorially.

## REFMAN - Time Management Module

Provides the Superintendent or Port Engineer with facilities to schedule and monitor the progress of all jobs in a REFMAN specification. For each job, it is possible to record start date & duration and optionally, specify which jobs must be completed before the job can start, which jobs must at least have started before the job can start and which jobs must be finished before the job can be completed.

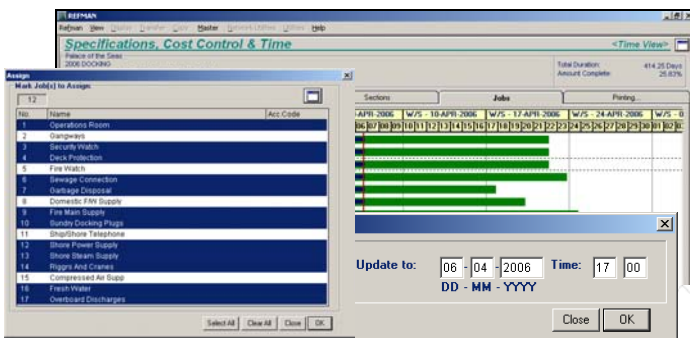
### Features:-

- Complete monitoring of the progress of yard jobs and scheduling of 'owners' jobs, without the need to learn complicated project management software.
- Can also be used with the Shipboard Defect Recording module for planning projects onboard.



Section progress summary shows overall progress.

- Shipyard can supply estimated duration and start day (an actual date or a "day number" during the docking) and specify which jobs are "critical". These details can all be loaded automatically into the specification along with the yard's bid.
- Schedule and monitor jobs carried out by owner's contractors and other specialists.

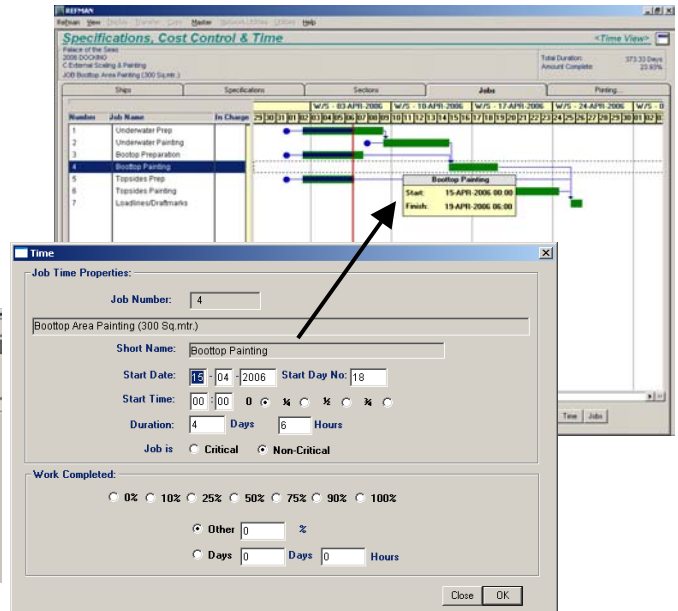


See the progress of each individual job with automatic updating.

- Automatic updating of "Percentage Complete" for jobs that are "on schedule". Update just selected jobs or "all" jobs in a single section, all jobs in "selected" sections or all jobs in "all" sections in a specification".
- Full range of links including "later job can not start before earlier job finishes", "later job can not start before earlier job starts" and "later job can not finish before earlier job finishes".

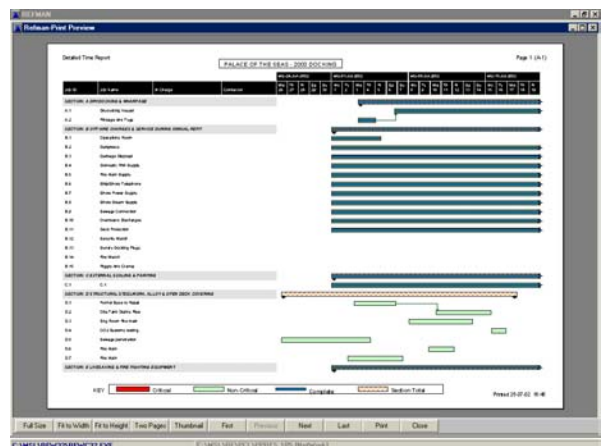
## ...another essential companion to REFMAN's Specification Generator & Shipboard Defect Recording Modules.

- If an earlier job is re-scheduled and this affects other later jobs (i.e. "linked" jobs) then the user is prompted and the later jobs can be re-scheduled automatically.



Easy to use, just "drag and drop" to set times & durations.

- Choice of conventional numerical input for "dates & times" or simple to use on-screen "drag and drop" for both scheduling jobs and setting durations.
- On-Screen indicator with pop-up information box to indicate that one job is linked to other jobs in a different section of the specification.
- Automatic Generation of time bar (Gantt) chart for the entire specification or just the jobs in a particular section.
- Flexible printing options which allow time bar (Gantt) chart to be printed with a choice of timescales, with and without links & with and without "gridlines".



Full control over appearance of printed time bar (Gantt) chart.

System Requirements: As per REFMAN's Specification Generator module.